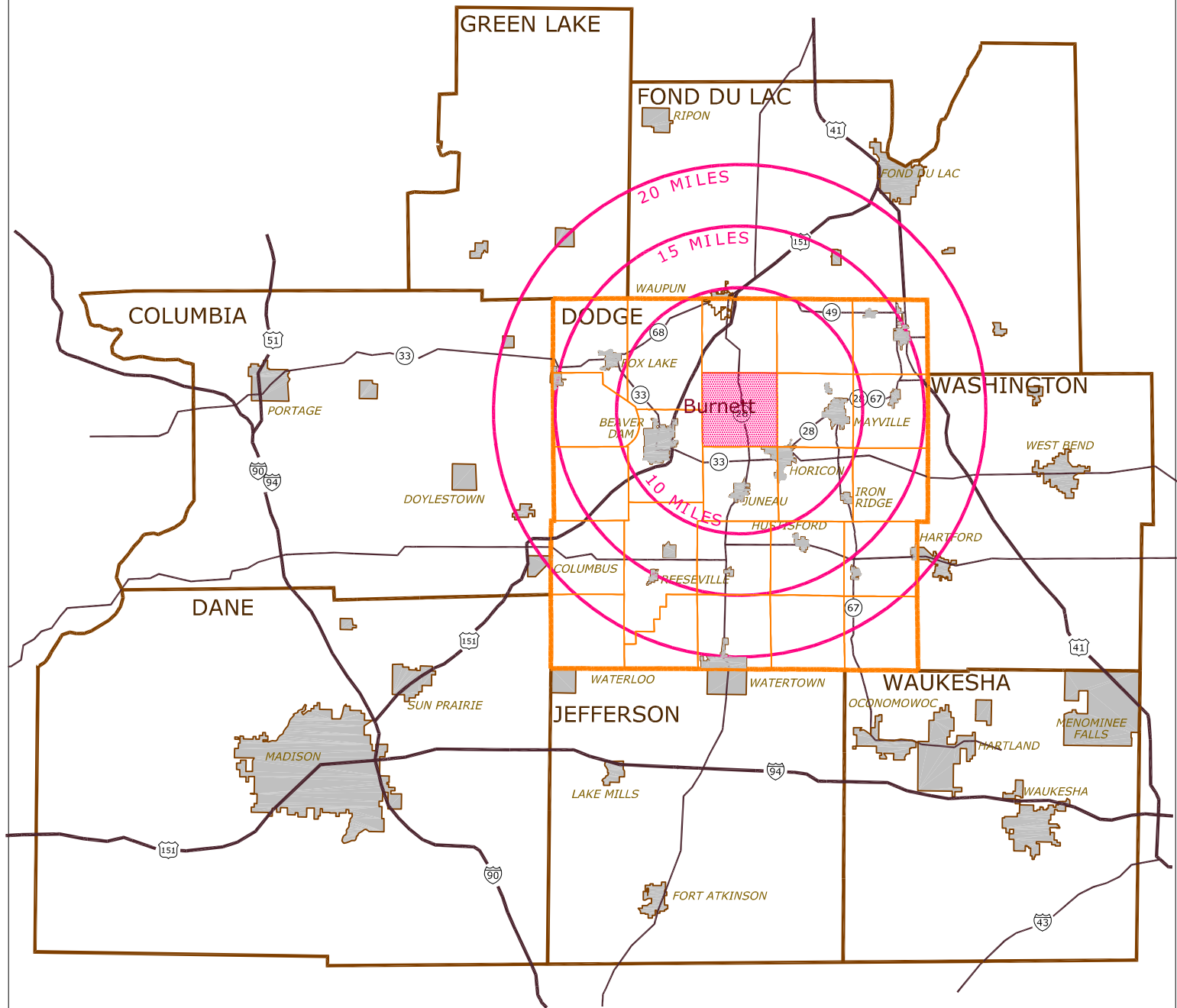


Map 1-1 Regional Setting Town of Burnett, Dodge County, Wisconsin

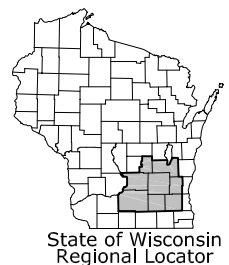


- | | |
|-----------------------|----------------------------|
| U.S. Highway | Dodge County Town Boundary |
| State Highway | City or Village |
| County Boundary | Municipality Site |
| Dodge County Boundary | Site Radius Boundary |

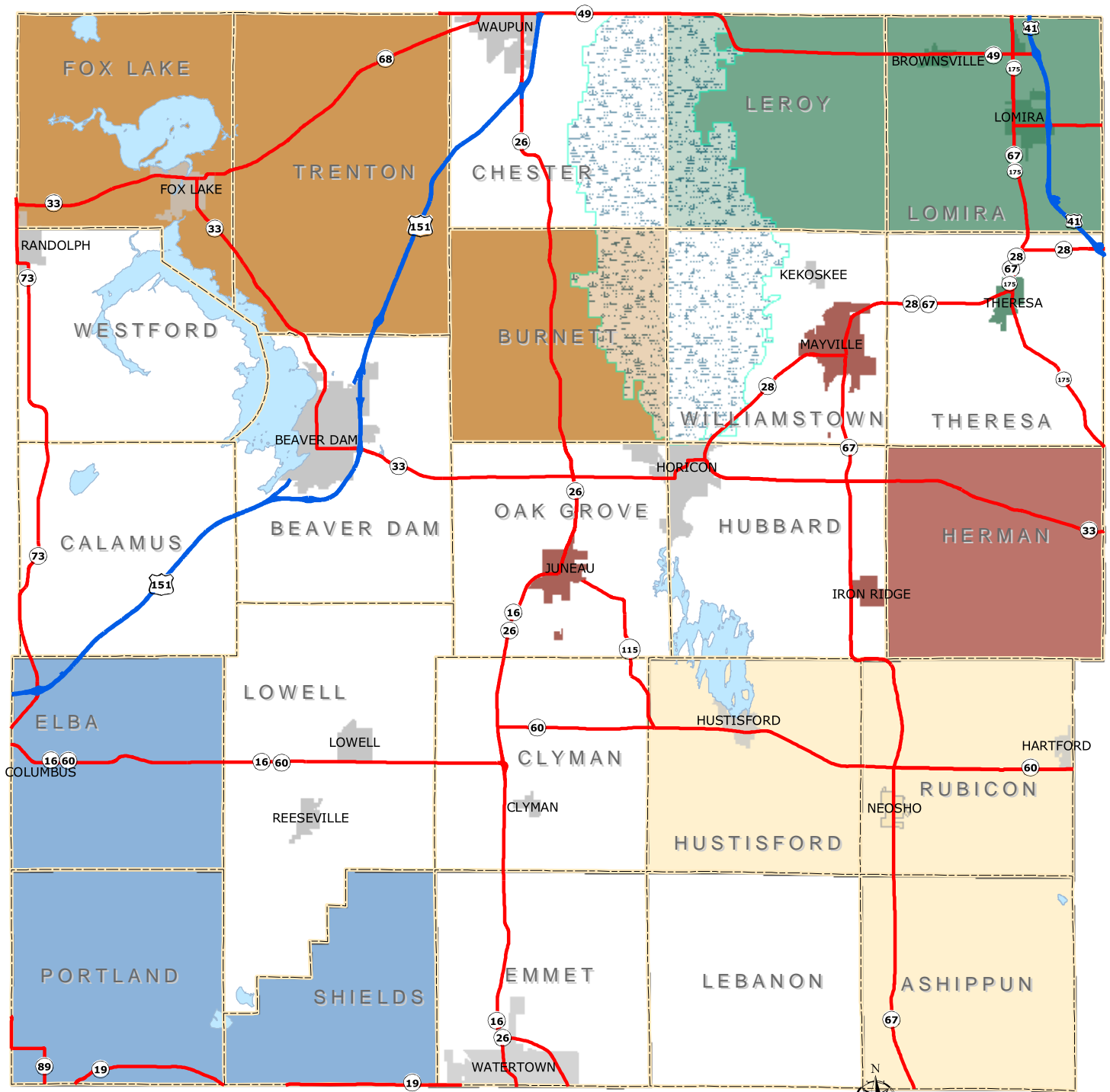


0 10 15 20 25
SCALE: 1 INCH = APPROX. 12 MILES

Dodge County
Planning and Development
Department



Map 1-2, Multi-jurisdictional Plan Groupings Dodge County, Wisconsin



Legend

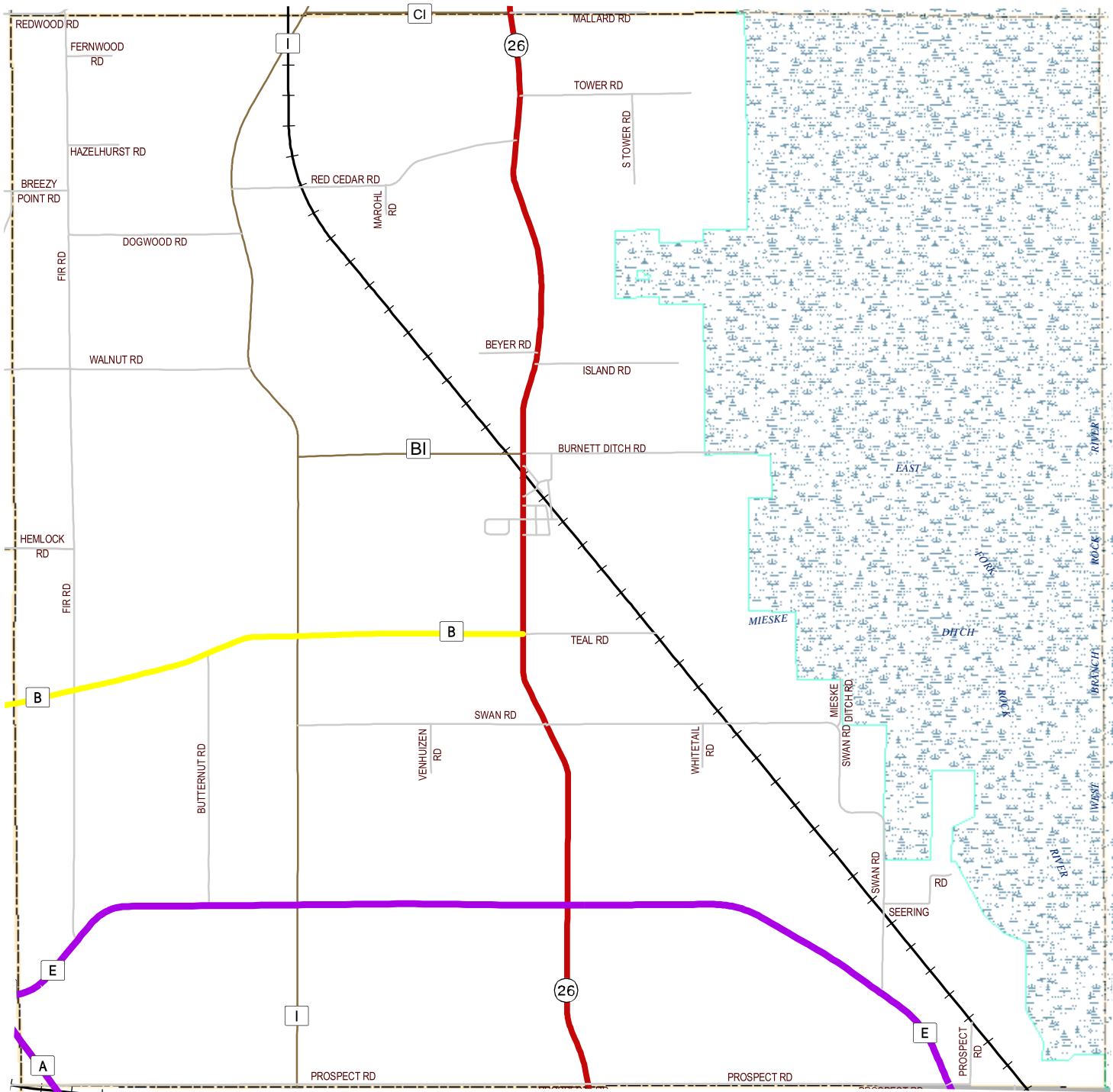
- | | |
|--|---|
| Towns of Leroy, Lomira, and Villages of Lomira, Brownsville, and Theresa | Town Boundaries |
| Towns of Trenton, Fox Lake, and Burnett | Municipalities (Not Participating) |
| Towns of Rubicon, Ashippun, and Hustisford and Village of Neosho | U.S. Highway |
| Towns of Elba, Portland, and Shields | State Highway |
| Town of Herman, Village of Iron Ridge, and Cities of Mayville and Juneau | Horicon Marsh |
| Towns Not Participating | Lake |

Source: Dodge County Planning and Development Department, April 2004

Dodge County
Planning and Development
Department

0 2.5 5 10 Miles

Map 3-1, Functional Classification of Highways & Location of Railroads and Airports Town of Burnett, Dodge County, Wisconsin



Legend

Functional Roadway Classification

- Principal Arterials
- Minor Arterials
- Major Collectors
- Minor Collectors
- Local

- Railroads
- Airport
- Town Boundaries
- Municipalities
- Lake
- Horicon Marsh

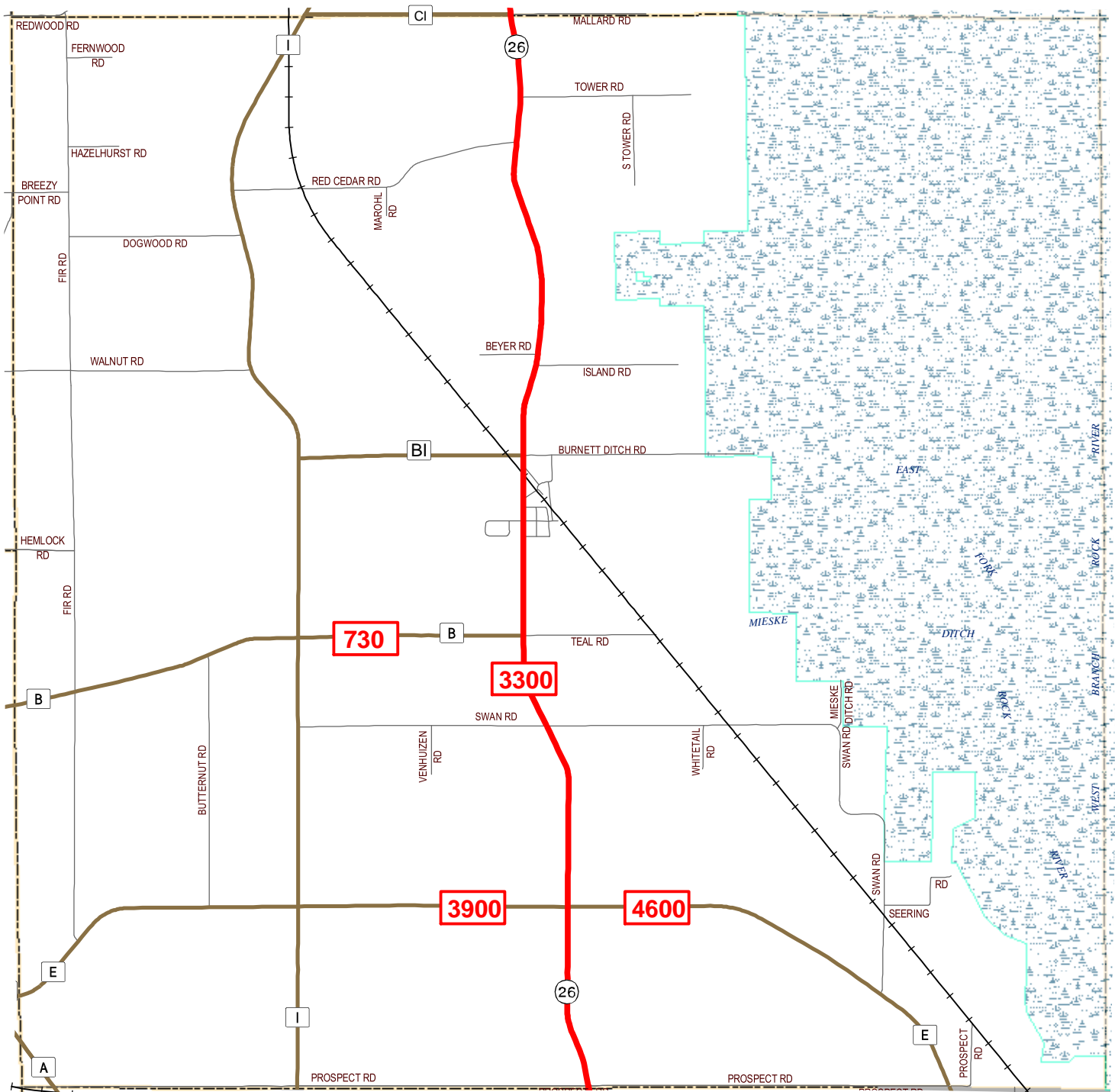
Dodge County
Planning and Development
Department

Dodge County Wisconsin

Town of Burnett

0 0.5 1 2 Miles

Map 3-2, Average Daily Traffic Counts Town of Burnett, Dodge County, Wisconsin



Legend

- U. S. Highway
- State Highway
- County Highway
- Town Road
- Railroad
- Town Boundary
- Average Daily Traffic Counts (2001)
- Waterbodies
- Municipalities
- Horicon Marsh

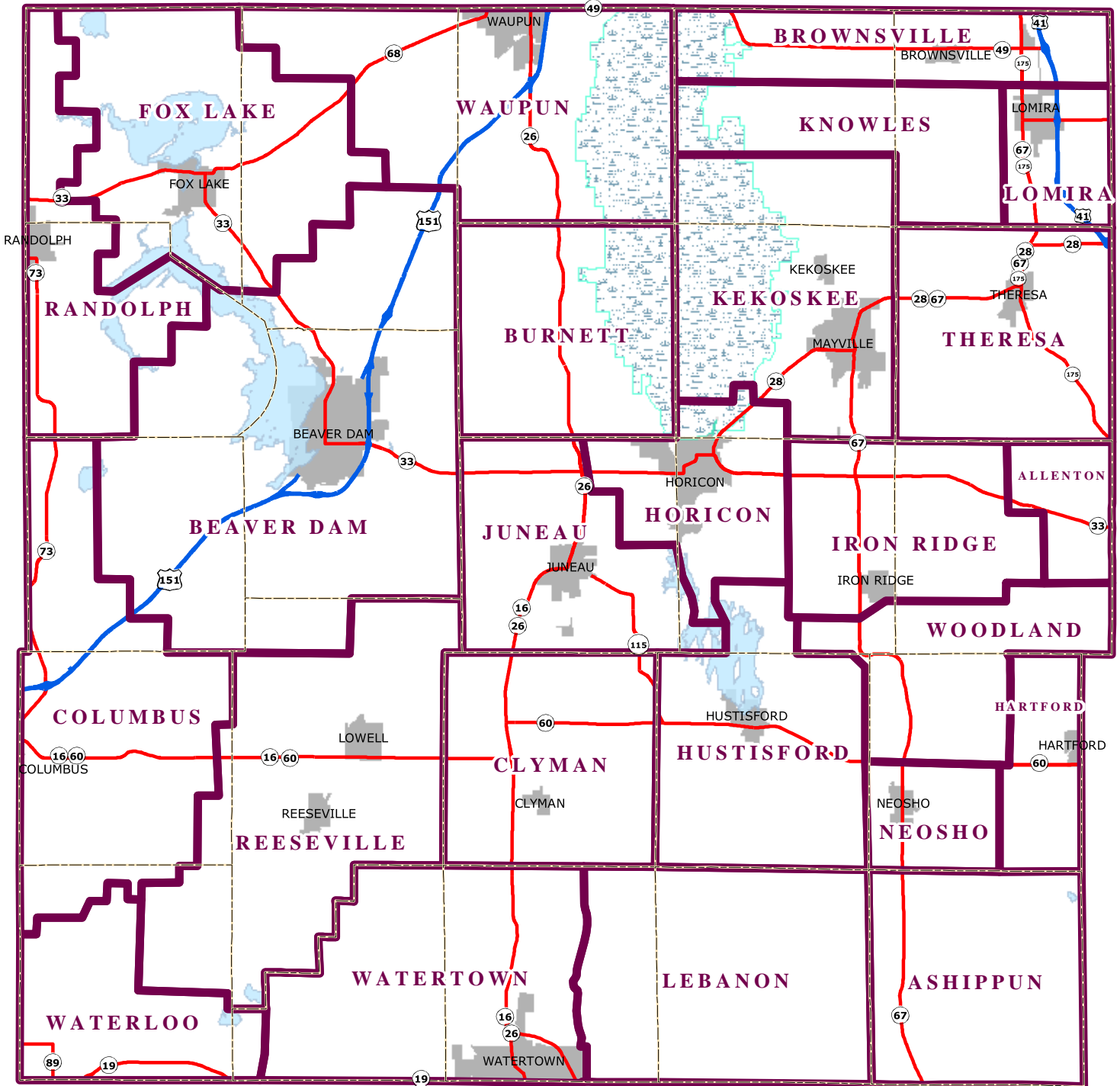
Dodge County
Planning and Development
Department

Dodge County Wisconsin


Town of Burnett

0 0.5 1 2 Miles

Map 4-1, Fire Emergency Service Areas Dodge County, Wisconsin

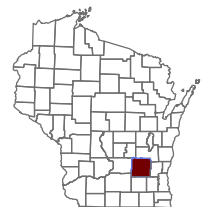


Legend

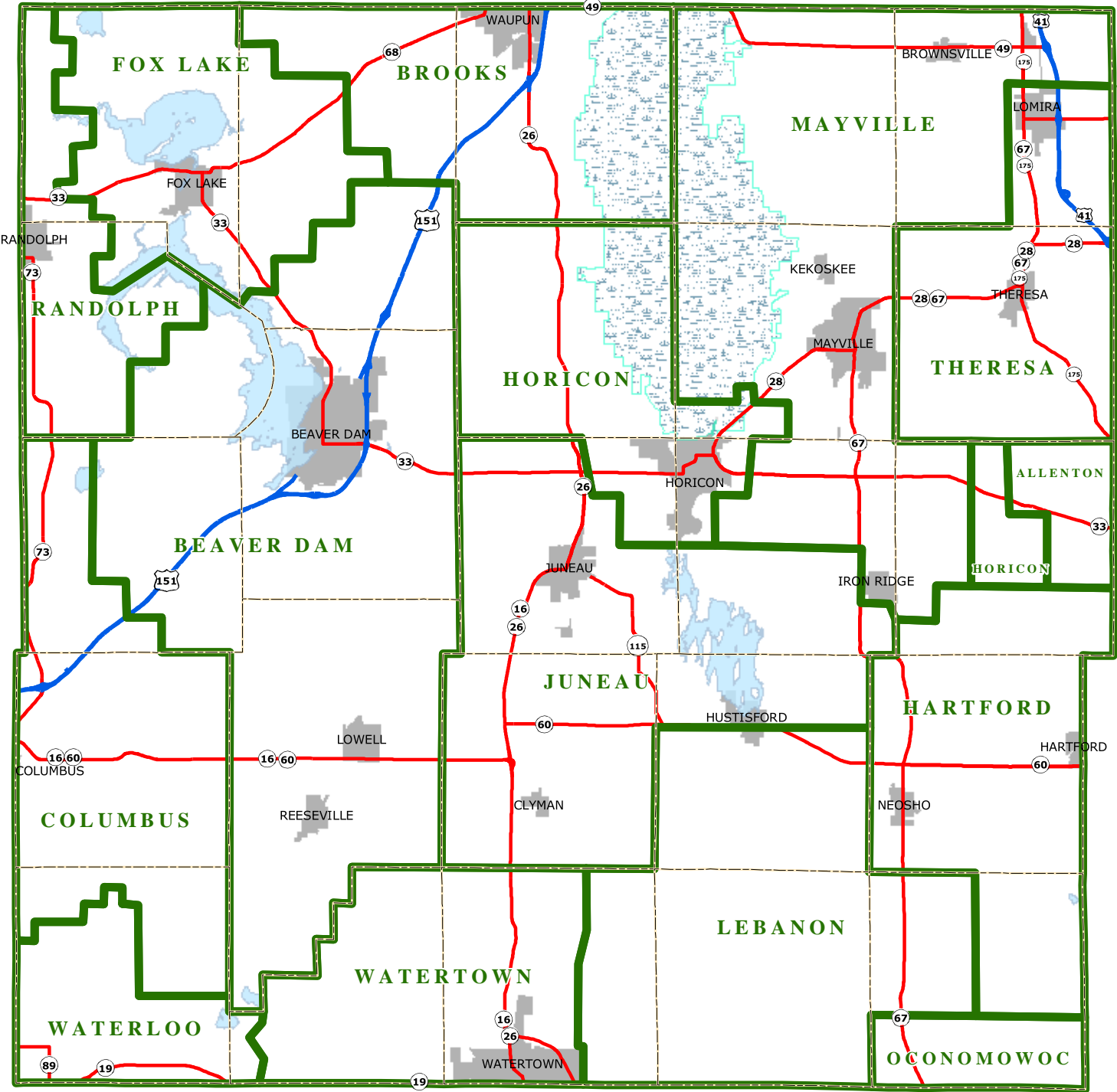
-  U.S. Highway
-  State Highway
-  Town Boundaries
-  Municipalities
-  Fire Dispatch Regions
-  Horicon Marsh
-  Lake



Dodge County
Planning and Development
Department



Map 4-2, Emergency Medical Service Areas Dodge County, Wisconsin



Legend

U.S. Highway

State Highway

Town Boundaries

Municipalities

EMS Dispatch Regions

Horicon Marsh

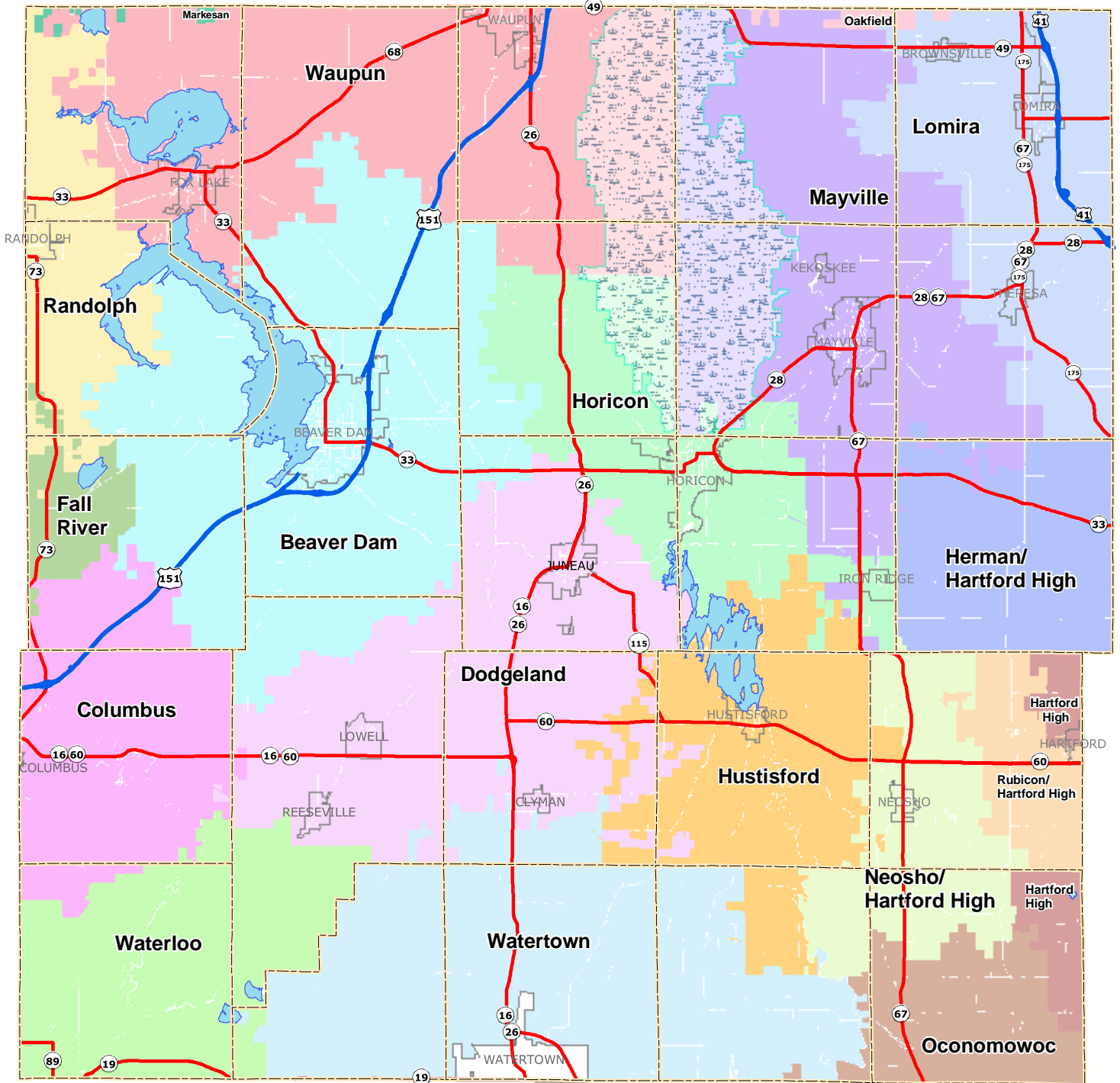
Lake

Source: Dodge County Planning and Development Department, April 2004
Dodge County Sheriff's Department

Dodge County
Planning and Development
Department

0 2.5 5 10 Miles

Map 4-3, School District Boundaries Dodge County, Wisconsin



Legend

- U.S. Highway
- State Highway
- Town Boundaries
- Municipalities
- Horicon Marsh
- Lake

School Districts

- Beaver Dam
- Columbus
- Fall River
- Hartford High
- Herman/Hartford High
- Horicon
- Hustisford
- Dodge/land
- Lomira
- Mayville
- Neosho/Hartford High
- Oakfield
- Oconomowoc
- Randolph
- Rubicon/Hartford High
- Waterloo
- Watertown
- Waupun



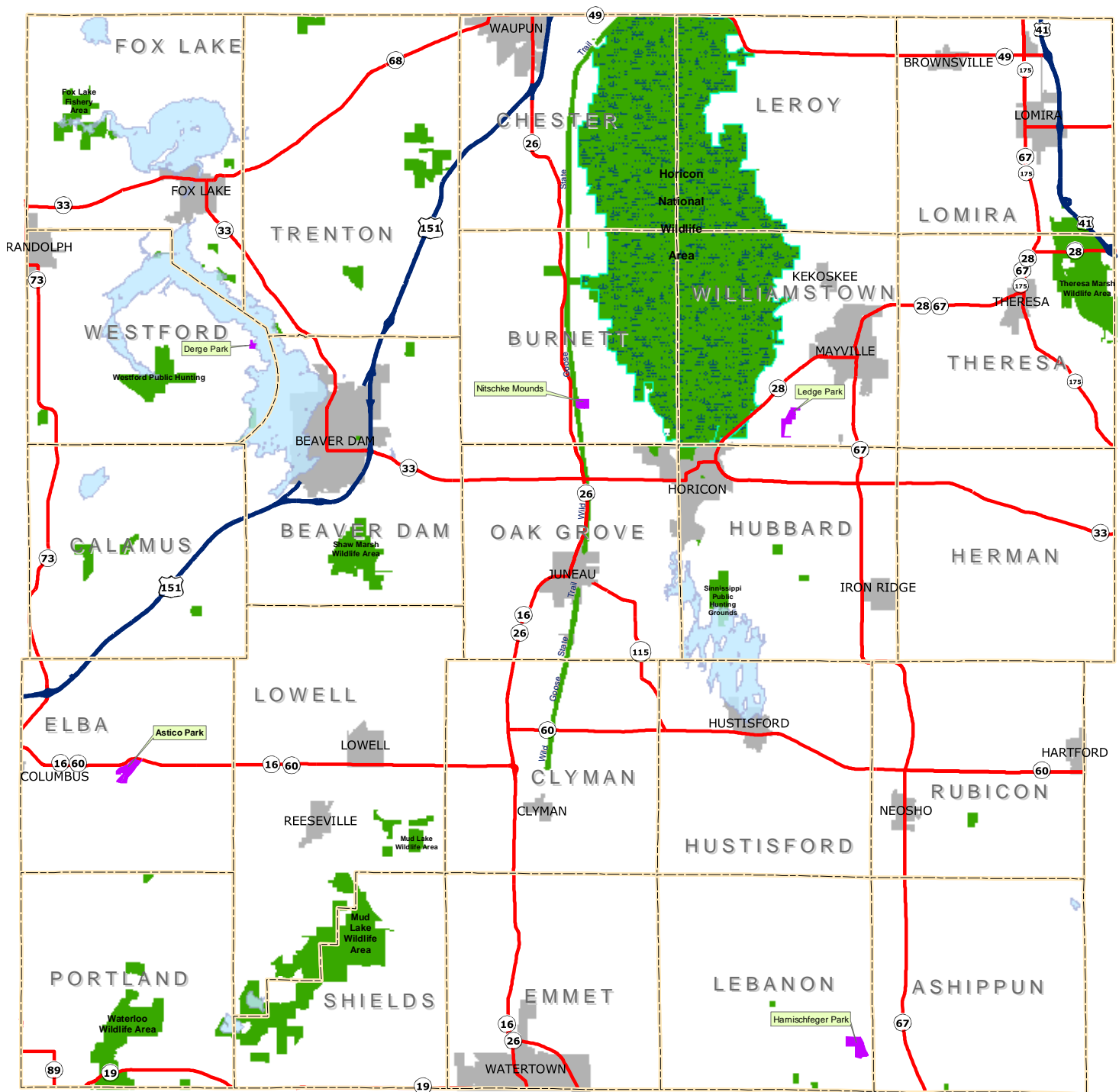
Dodge County
Planning and Development
Department



Source: Dodge County Land Information Department, April 2004

0 2.5 5 10 Miles

Map 4-4, County, State, & Federal Recreation Areas Dodge County, Wisconsin



Legend

- | | |
|-----------------|------------------------------------|
| U.S. Highway | County Recreation Areas |
| State Highway | Federal and State Recreation Areas |
| Town Boundaries | Horicon Marsh |
| Municipalities | Lake |

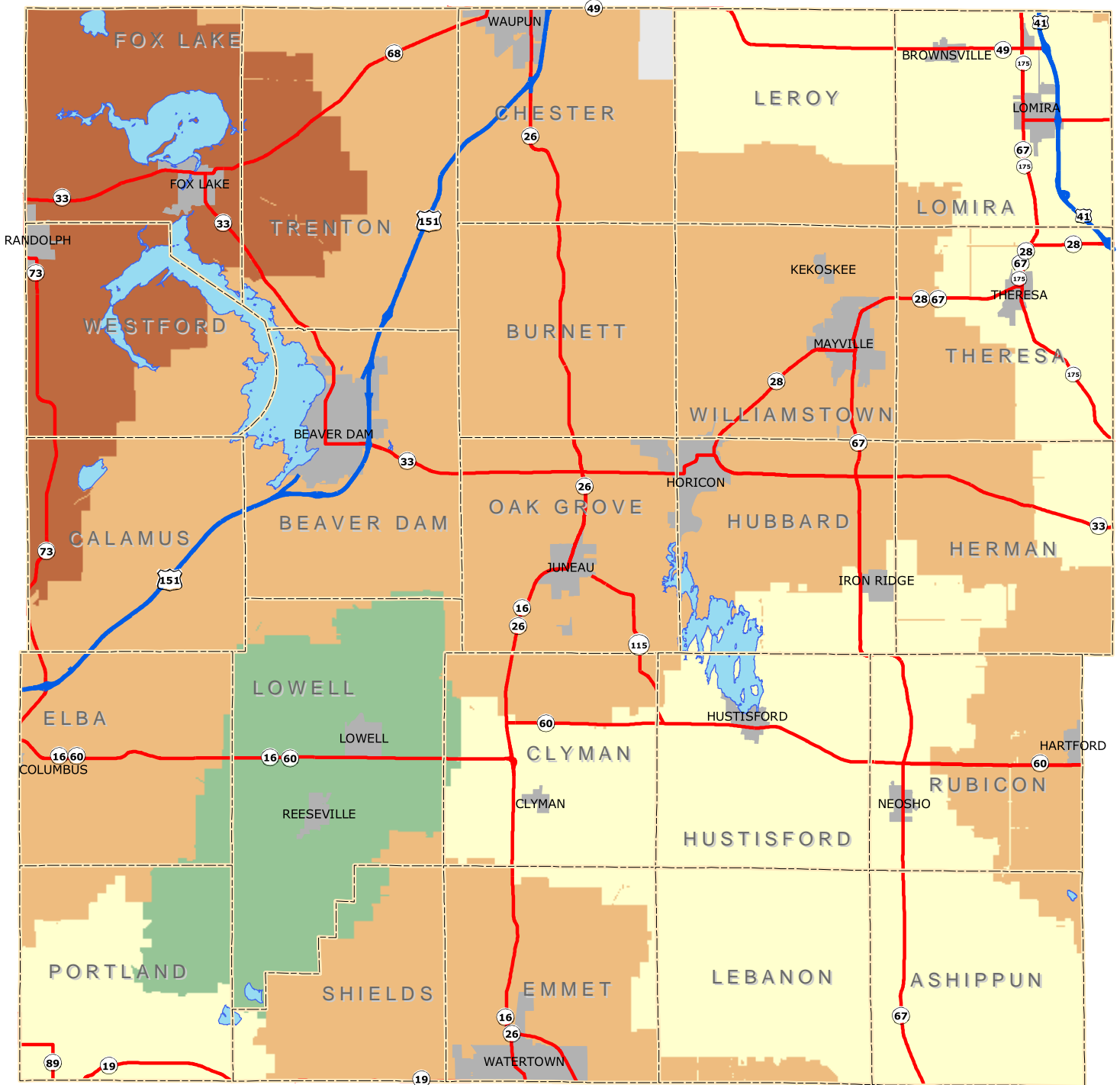


Dodge County
Planning and Development
Department

Source: Dodge County Planning and Development Department, April 2004

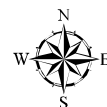
0 2.5 5 10 Miles

Map 4-5, Telephone Service Providers Dodge County, Wisconsin



Legend

- | | | | |
|--|-----------------|--|----------------------------------|
| | U.S. Highway | | Century Tel, Inc. |
| | State Highway | | SBC WI |
| | Town Boundaries | | Telephone and Data Systems, Inc. |
| | Municipalities | | Unassigned Territory |
| | | | Verizon North, Inc. |
| | | | Lake |

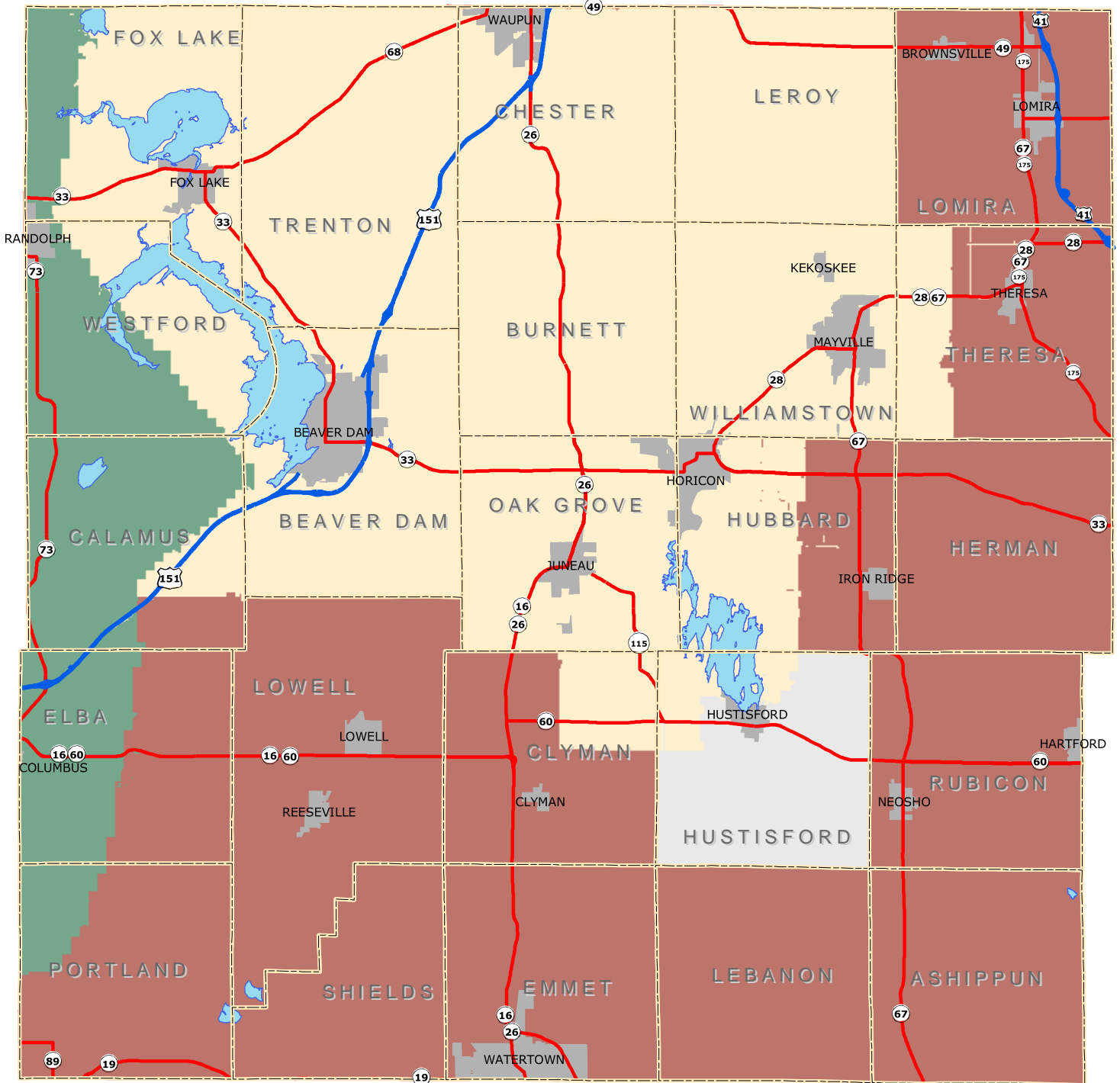


Dodge County
Planning and Development
Department



0 2.5 5 10 Miles

Map 4-6, Electric Utilities and Cooperatives Dodge County, Wisconsin



Legend

- | | |
|-----------------|--|
| U.S. Highway | Columbus Rural Electric Cooperative |
| State Highway | Municipalities (serving beyond corporate limits) |
| Town Boundaries | Wisconsin Electric Power Co. (private) |
| Municipalities | Alliant Energy |
| Lake | |



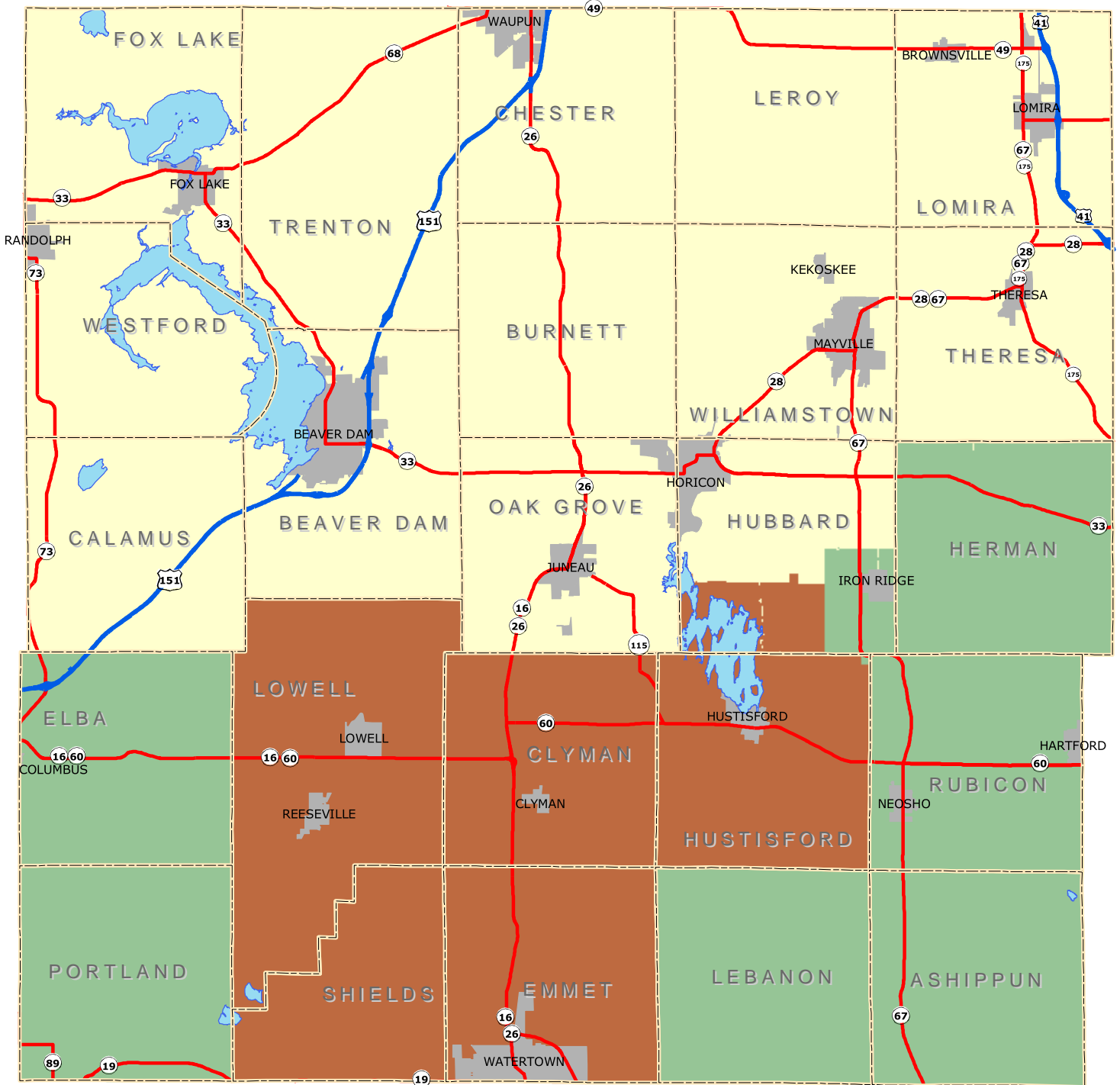
Dodge County
Planning and Development
Department



Source: Dodge County Planning and Development Department, April 2004
Derived from Wisconsin Department of Administration maps dated June 2002

0 2.5 5 10 Miles

Map 4-7, Natural Gas Service Providers
Dodge County, Wisconsin



Legend

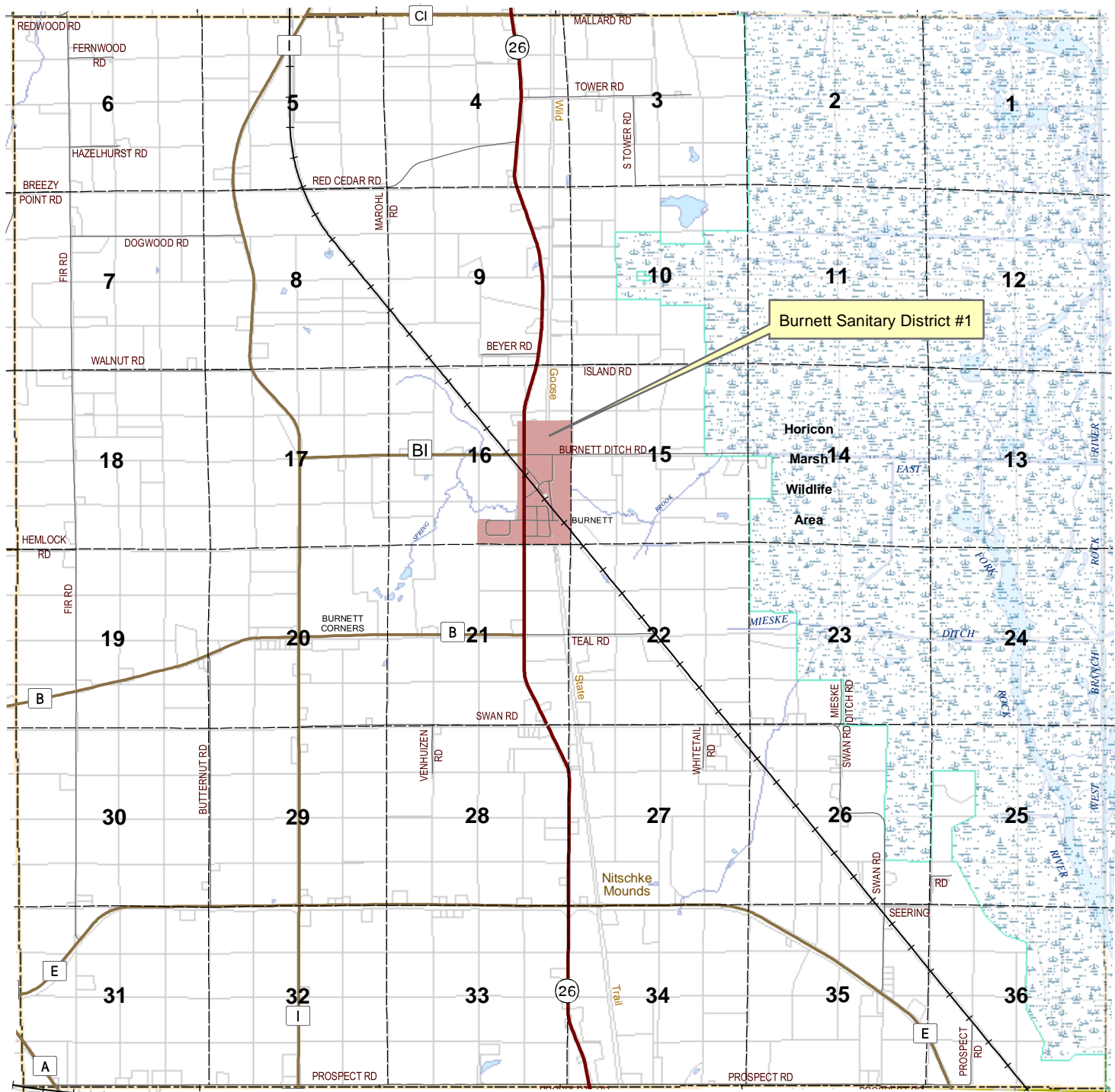
- | | |
|-----------------|--------------------------------------|
| U.S. Highway | Wisconsin Power and Electric Company |
| State Highway | Wisconsin Gas Company |
| Town Boundaries | Alliant Energy |
| Municipalities | |
| Lake | |



Dodge County
Planning and Development
Department



Map 4-8 , Public Sewer and Water Facilities Town of Burnett, Dodge County, Wisconsin



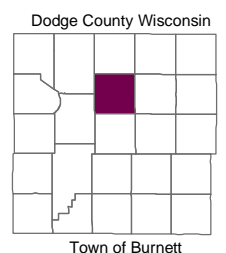
Legend

- | | | | |
|--|----------------|--|---|
| | U. S. Highway | | Horicon Marsh |
| | State Highway | | Tax Parcel Boundary |
| | County Highway | | River or Stream |
| | Town Road | | Waterbodies |
| | Railroad | | Public Sewer and Water Service |
| | Town Boundary | | Sanitary District |
| | Section Line | | Municipality without Public Sewer and Water Service |

Source: Dodge County Planning and Development Department, November 2004

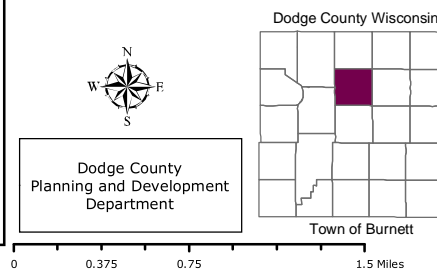
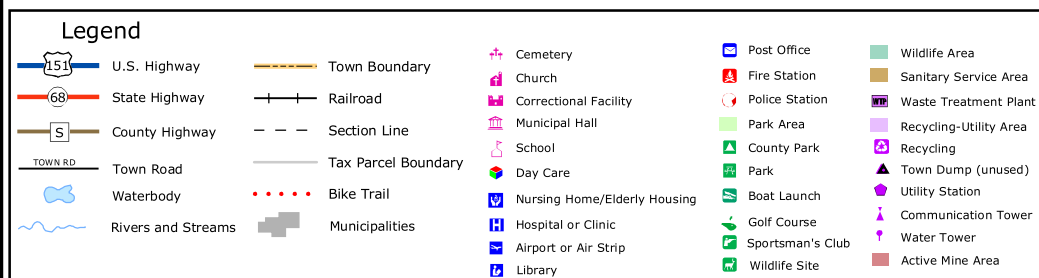
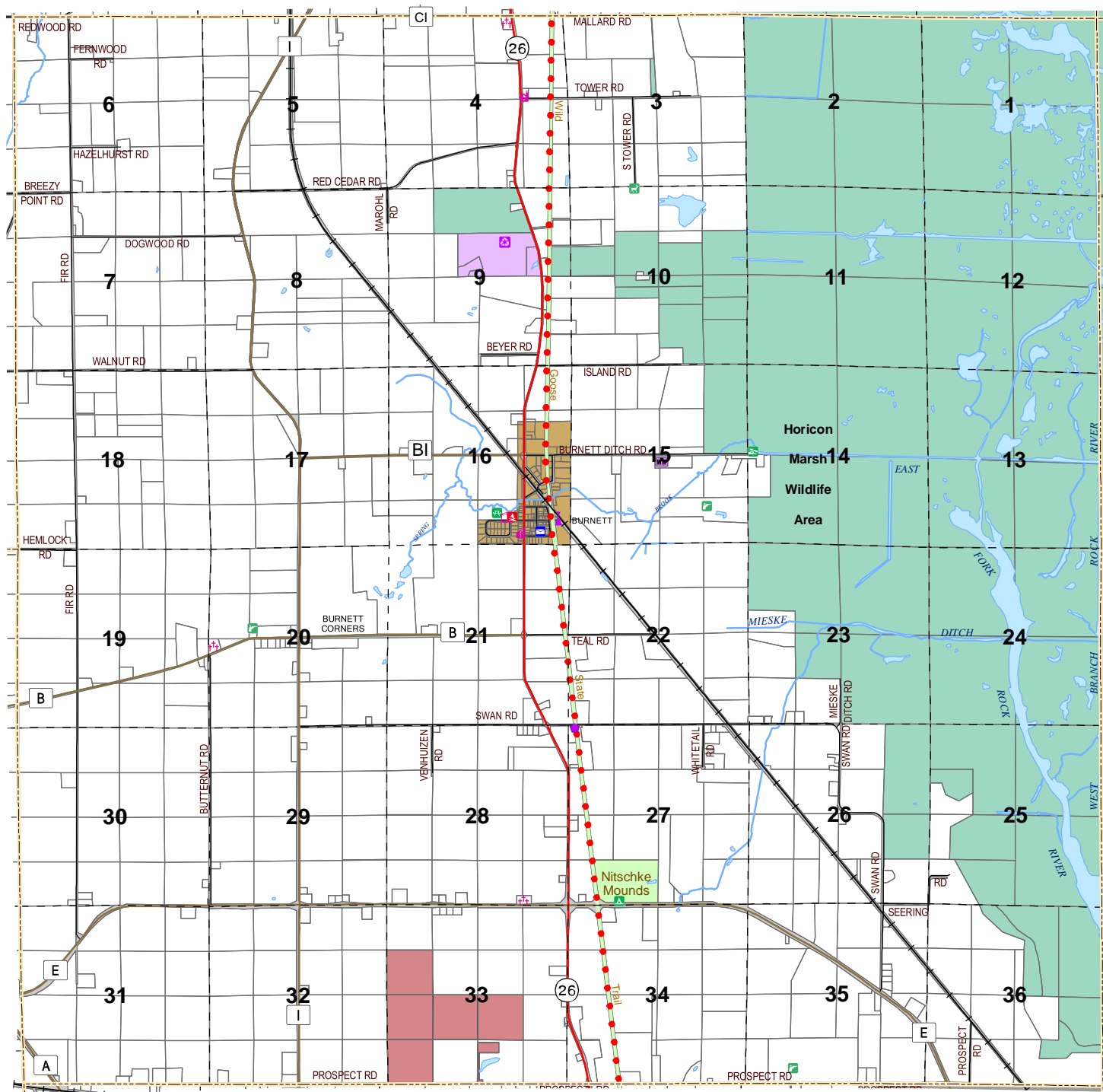


Dodge County
Planning and Development
Department



0 0.5 1 2 Miles

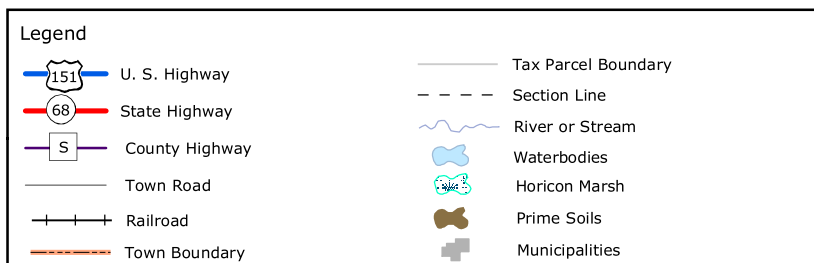
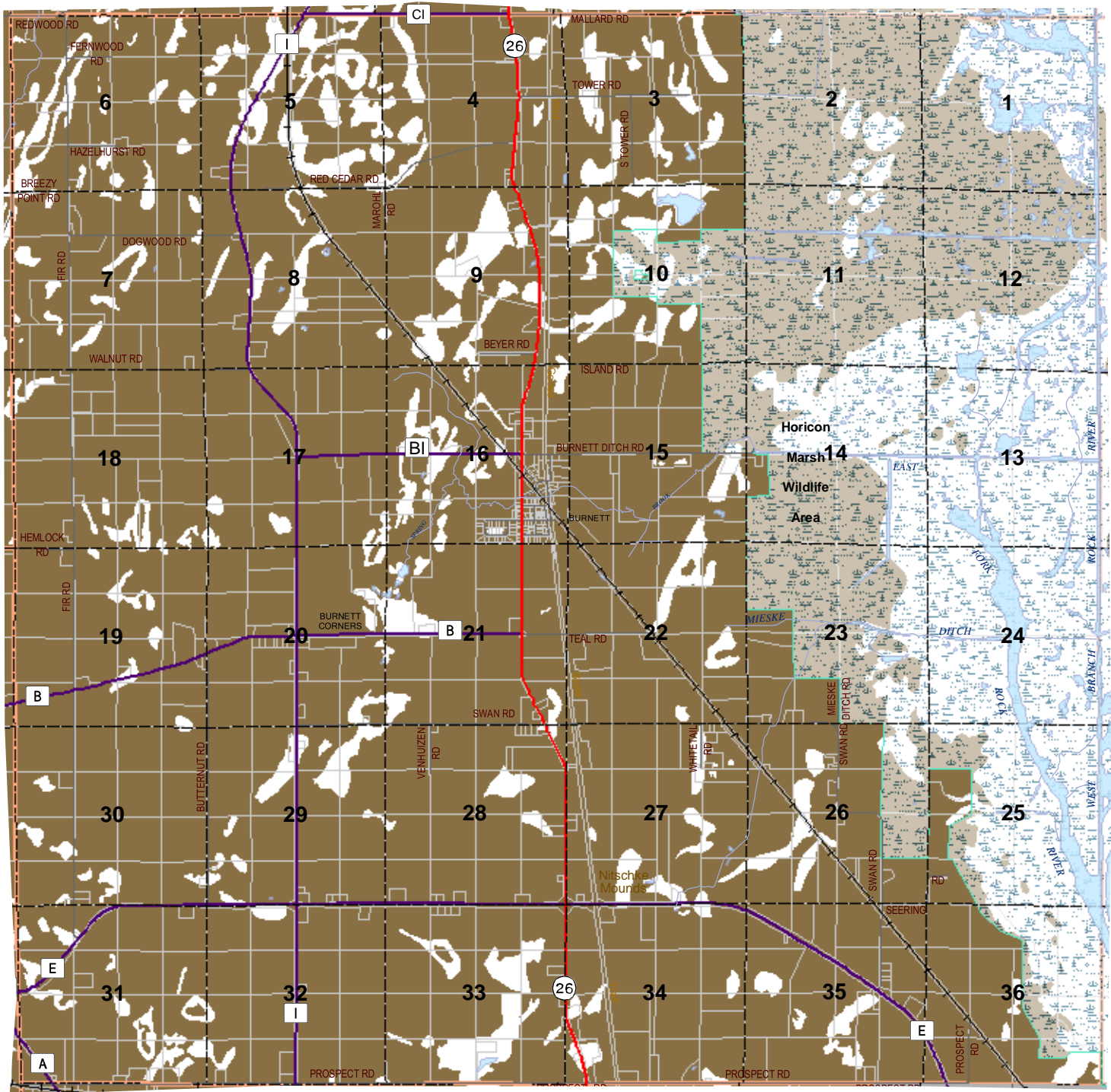
Map 4-9, Utilities and Community Facilities
Town of Burnett, Dodge County, Wisconsin



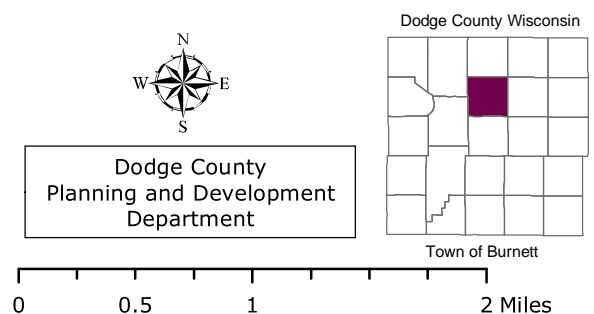
Source: Dodge County Planning and Development Department, October 2004

0	0.375	0.75	1.5 Miles
---	-------	------	-----------

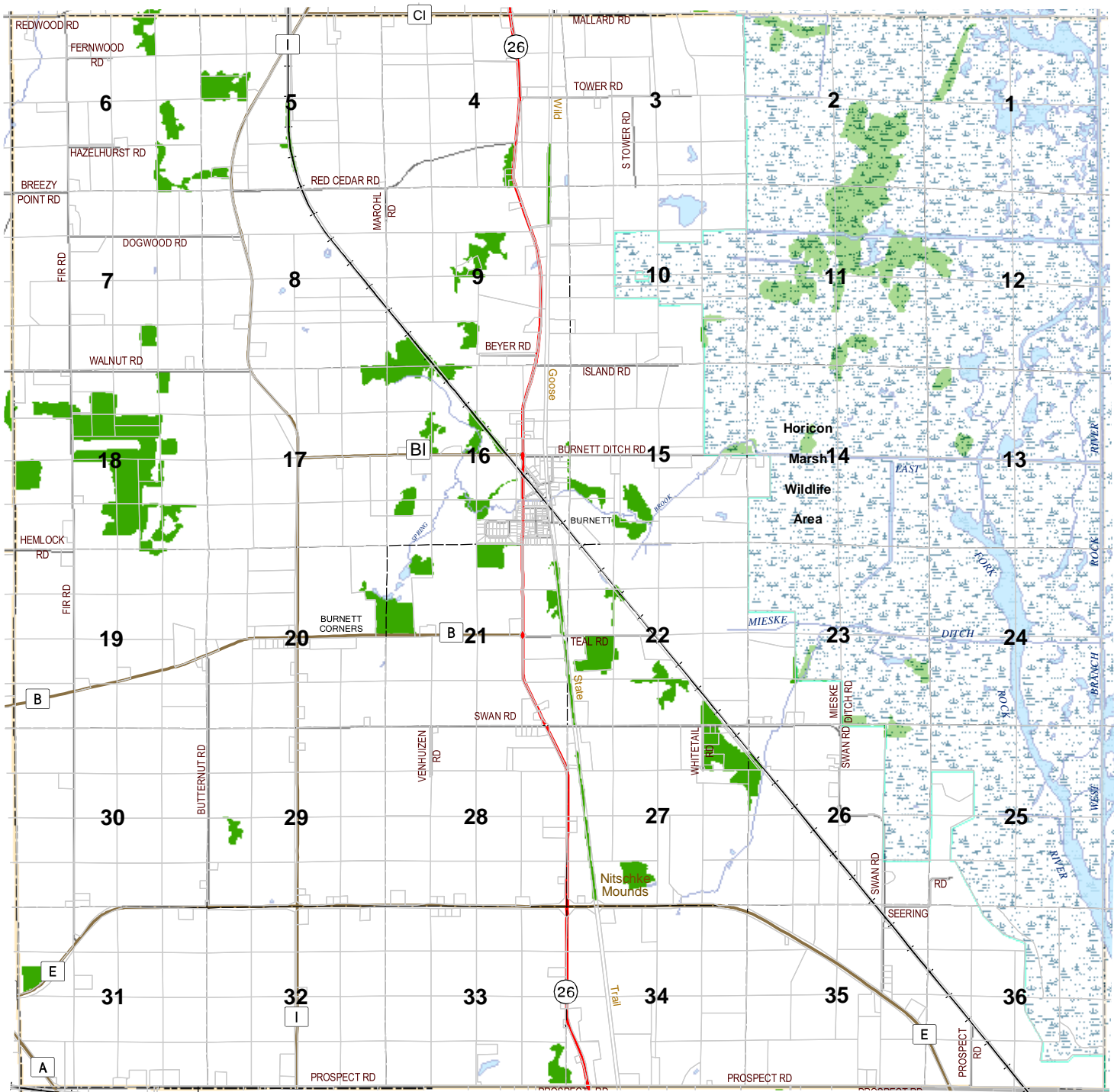
Map 5-1, Prime Agricultural Soils Town of Burnett, Dodge County, Wisconsin



Source: Dodge County Planning and Development Department, November 2004
Derived from US Department of Agriculture, Soil Conservation Service files, August 1998



Map 5-2, Woodlots Town of Burnett, Dodge County, Wisconsin



Legend

	U. S. Highway		Tax Parcel Boundary
	State Highway		Section Line
	County Highway		River or Stream
	Town Road		Horicon Marsh
	Railroad		Waterbodies
	Town Boundary		Woodlots
			Municipalities

Source: Dodge County Planning and Development Department, November 2004

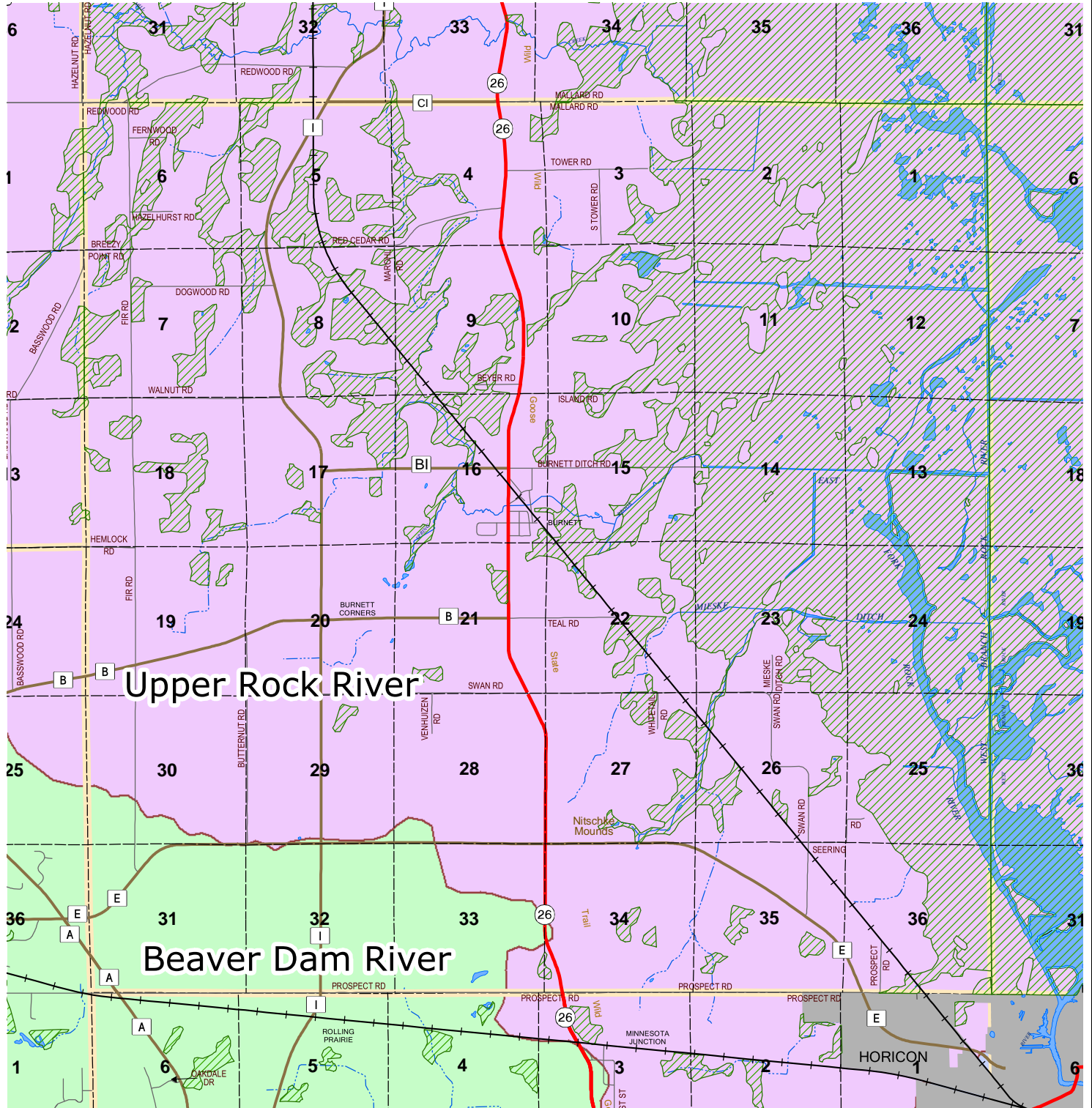
**Dodge County
Planning and Development
Department**

Dodge County Wisconsin

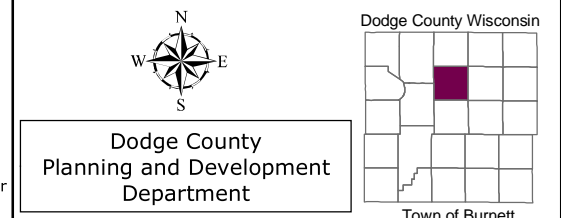
Town of Burnett

0 0.5 1 2 Miles

Map 5-3, Wetlands, Watersheds, Streams and Surface Water Town of Burnett, Dodge County, Wisconsin



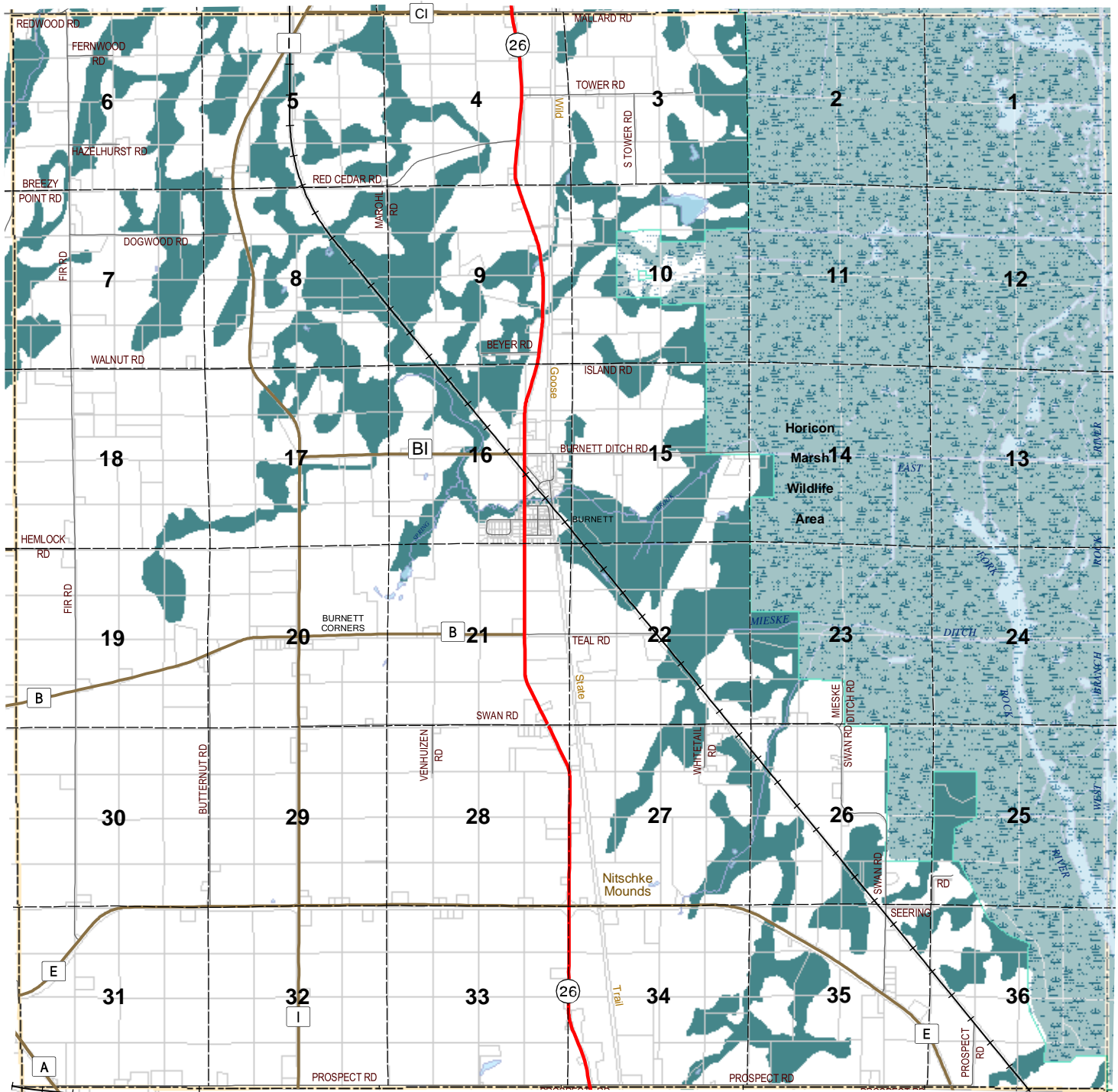
Legend		Watersheds	
	U.S. Highway		Ashippun River
	State Highway		Beaver Dam River
	County Highway		Calamus Creek
	Town Road		East Branch Rock River
	Railroad		East and West Branches Milwaukee River
	Town Boundary		Lower Crawfish River
	Wetlands		Lower Grand River
	Lakes and Ponds		Mauneshia River
	Rivers and Streams		Middle Rock River
	Streams		Oconomowoc River
	Intermittent Streams		Rubicon River
	Municipalities		Sinissippi Lake
			Upper Crawfish River
			Upper Rock River



Source: Dodge County Planning and Development Department, November 2004
Watersheds from DNR, Hydrology derived from USGS topographic maps.

0 0.5 1 2 Miles

Map 5-4, Floodplains Town of Burnett, Dodge County, Wisconsin



Legend

	U. S. Highway		Tax Parcel Boundary
	State Highway		River or Stream
	County Highway		Waterbodies
	Town Road		Horicon Marsh
	Railroad		Municipalities
	Town Boundary		Floodplains
	Section Line		

Dodge County Wisconsin

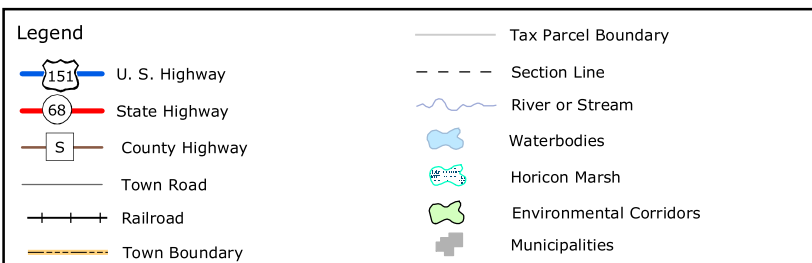
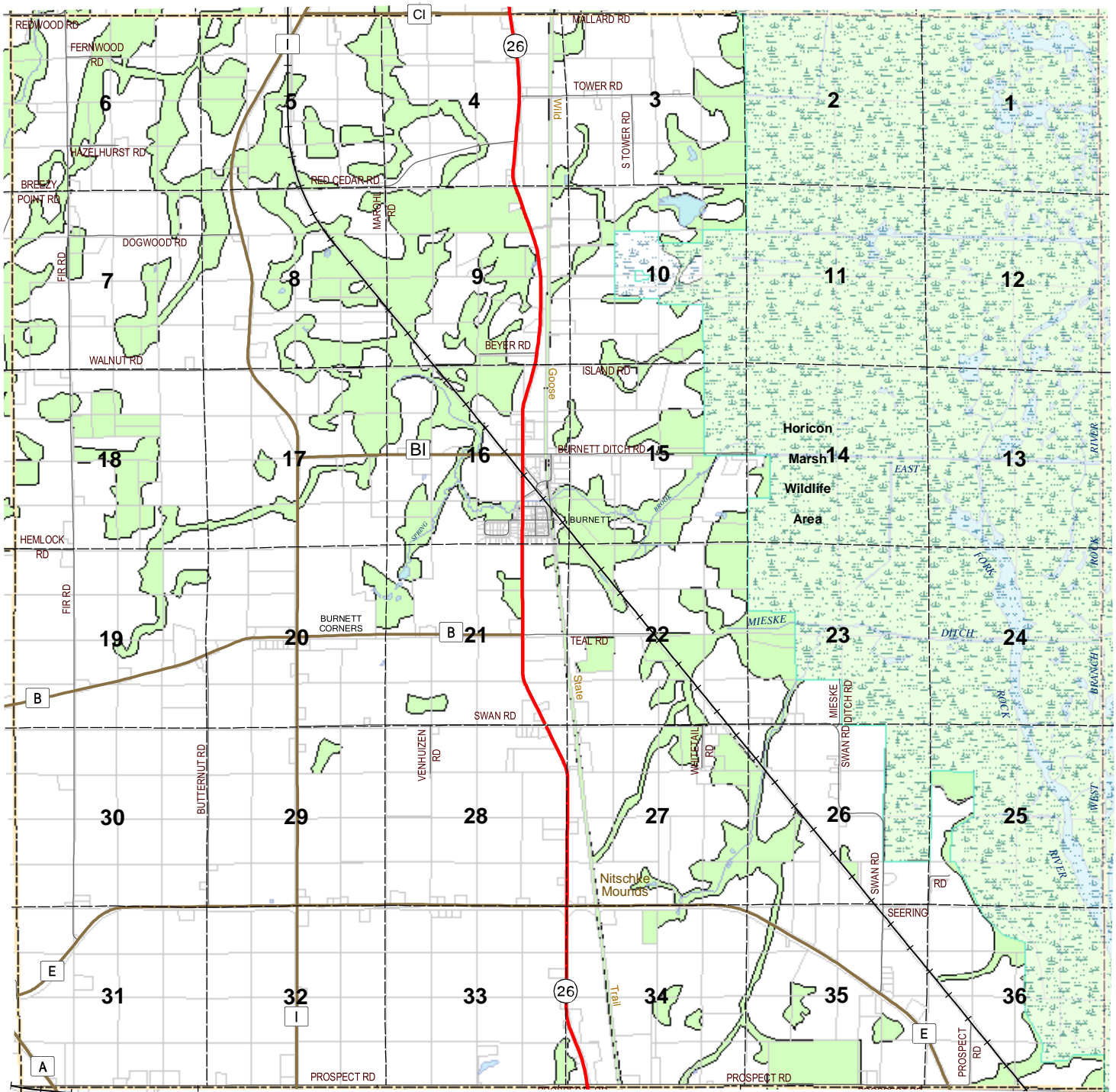
Town of Burnett

Dodge County Planning and Development Department

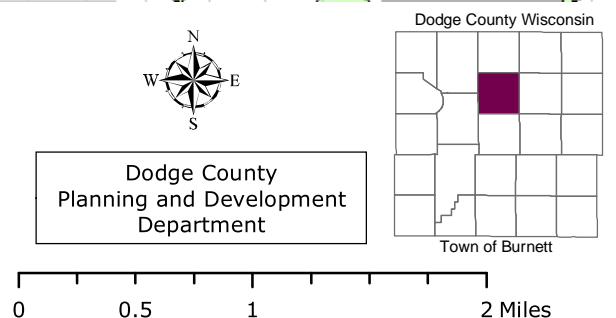
0 0.5 1 2 Miles

Source: Dodge County Planning and Development Department, November 2004
Created from Flood Insurance Rate Map

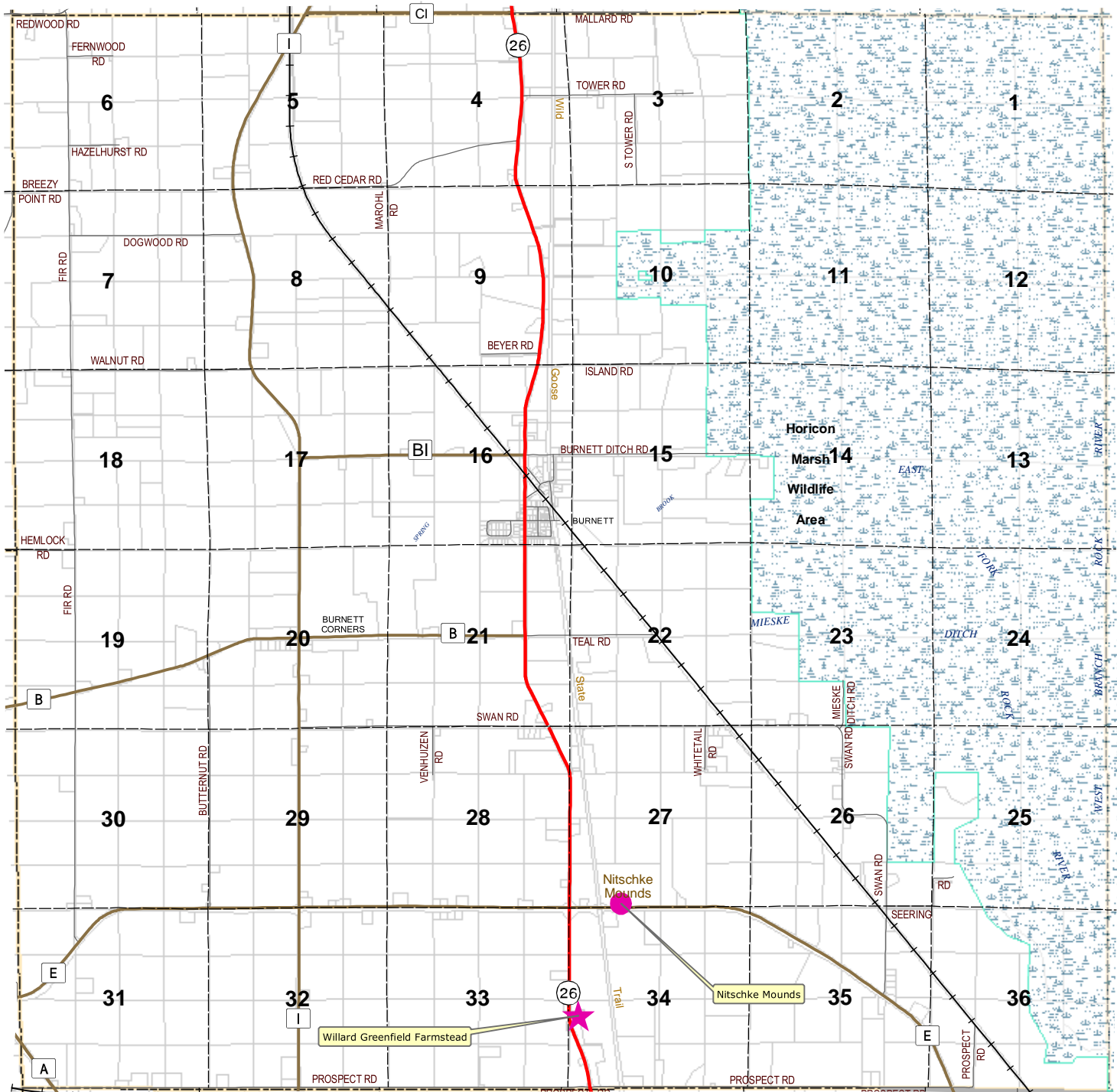
Map 5-5, Environmental Corridors Town of Burnett, Dodge County, Wisconsin



Source: Dodge County Planning and Development Department, November 2004



Map 5-6, Historical, Cultural, and Archaeological Resources Town of Burnett, Dodge County, Wisconsin

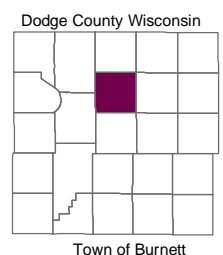


Legend		Resource	
	U. S. Highway		Cultural Site
	State Highway		Museum
	County Highway		Museum - Historical Society
	Town Road		State or National Register Site
	Railroad		River or Stream
	Town Boundary		Waterbodies
	Section Line		Horicon Marsh
	Tax Parcel Boundary		Municipalities
			Burials are not shown due to protection

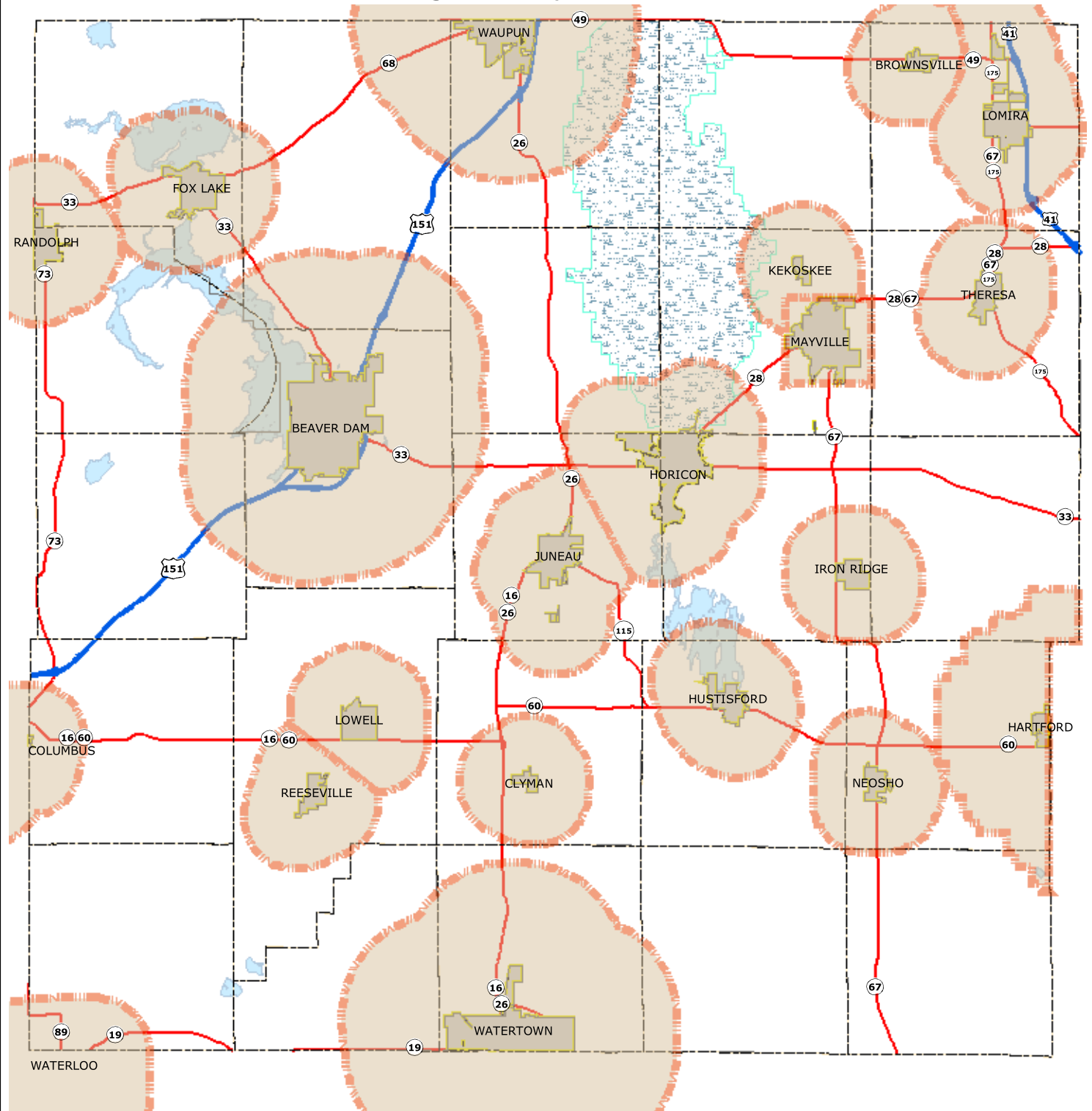
Source: Dodge County Planning and Development Department, November 2004

Dodge County
Planning and Development
Department

0 0.5 1 2 Miles



Map 7-1, Extraterritorial Jurisdiction Dodge County, Wisconsin

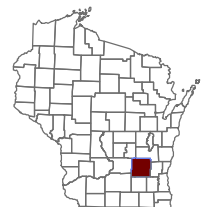


Legend

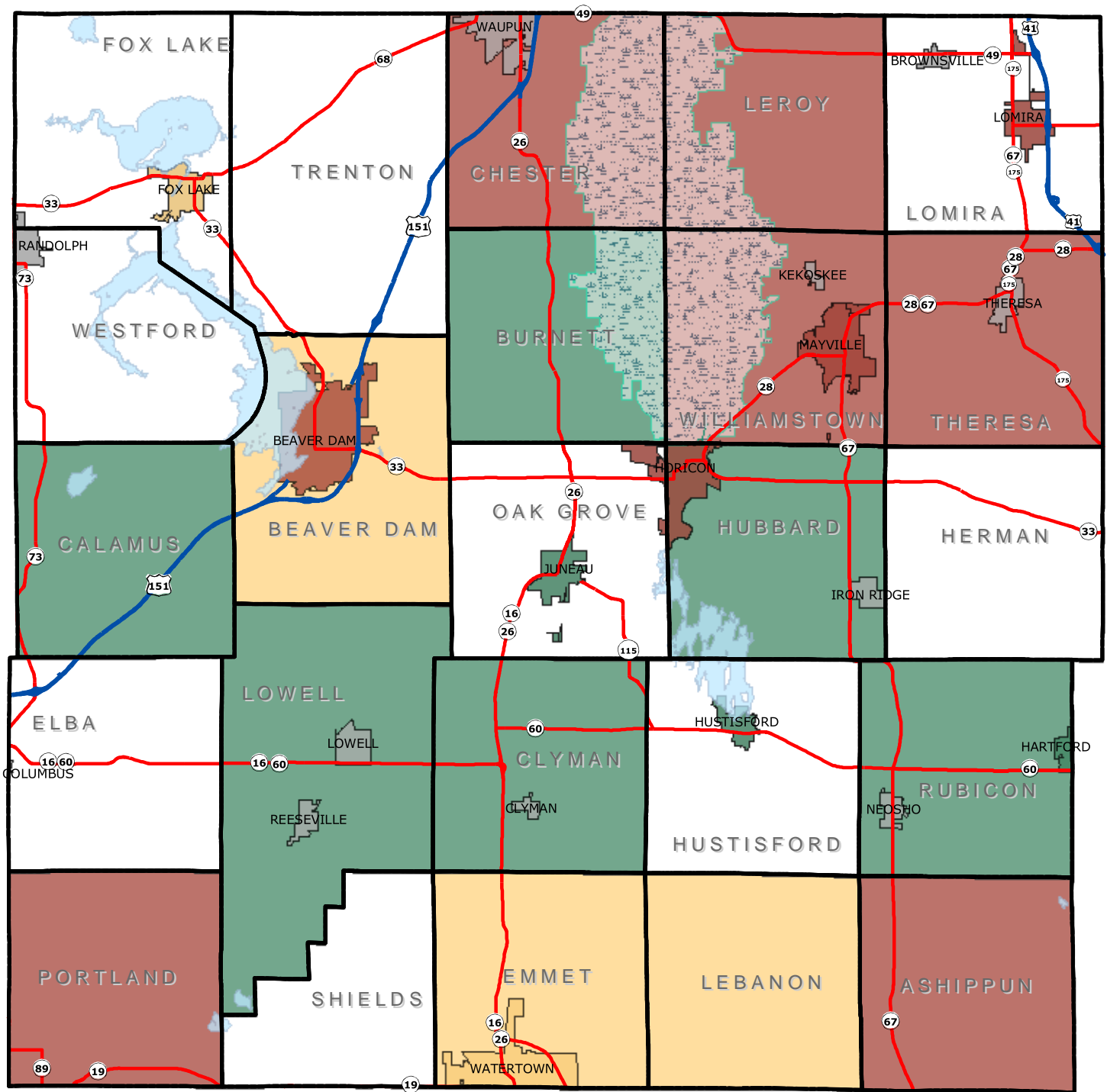
- U.S. Highway
- State Highway
- Town Boundaries
- Municipalities
- Extraterritorial Jurisdiction Boundary
- Horicon Marsh
- Lake



Dodge County
Planning and Development
Department



Map 7-2, Status of Planning
Dodge County, Wisconsin



Legend

- Land Use Plans
- Comprehensive Plans (Not Smart Growth)
- Smart Growth Comprehensive Plans
- No plans
- Municipalities (No plans)

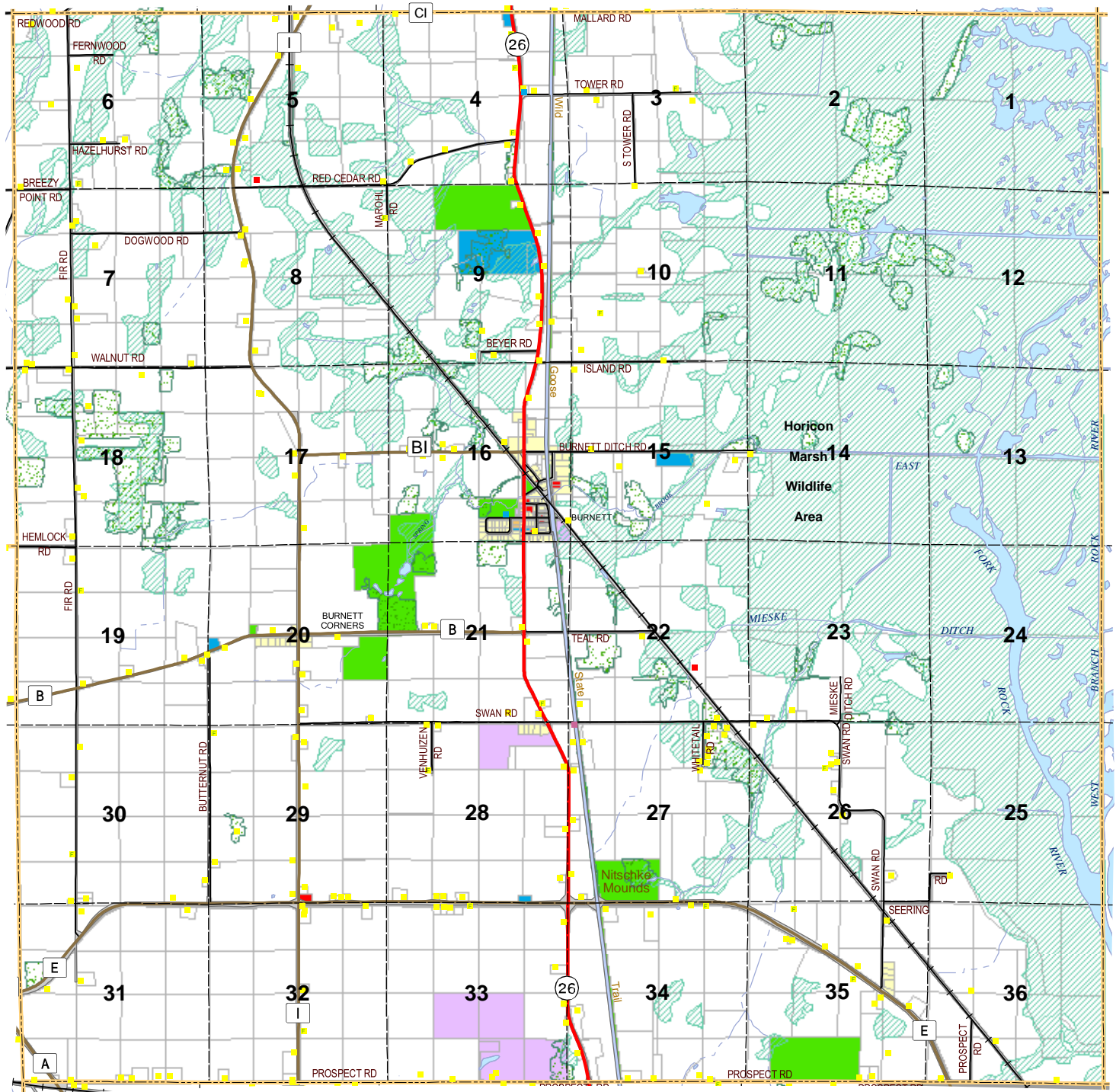
- U.S. Highway
- State Highway
- Horicon Marsh
- Lake



Dodge County
Planning and Development
Department



Map 8-1, Existing Land Use Town of Burnett, Dodge County, Wisconsin



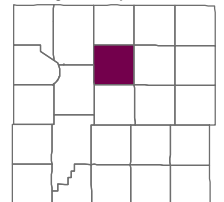
Legend

U.S. Highway	Section Line	Single Family Residential	Public & Quasi-Public
State Highway	Tax Parcel Boundary	Farmstead	Transportation
County Highway	Municipalities	Two Family Residential	Parks & Recreation
Town Road	Waterbody	Multi-Family Residential	Agriculture-Other Resource
Railroad	Rivers and Streams	Mobile Home Park	Communication & Utilities
Town Boundary	Intermittent Stream	Commercial	Wetland overlay
		Industrial	Woodland overlay



Dodge County
Planning and Development
Department

Dodge County Wisconsin

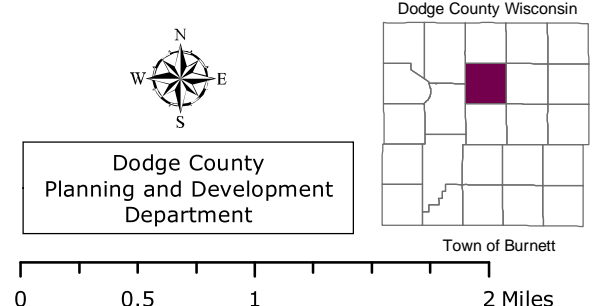
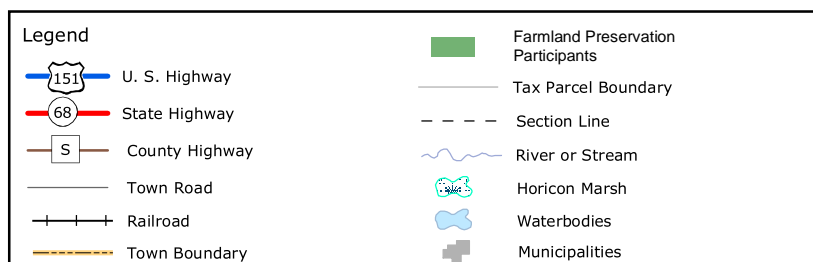
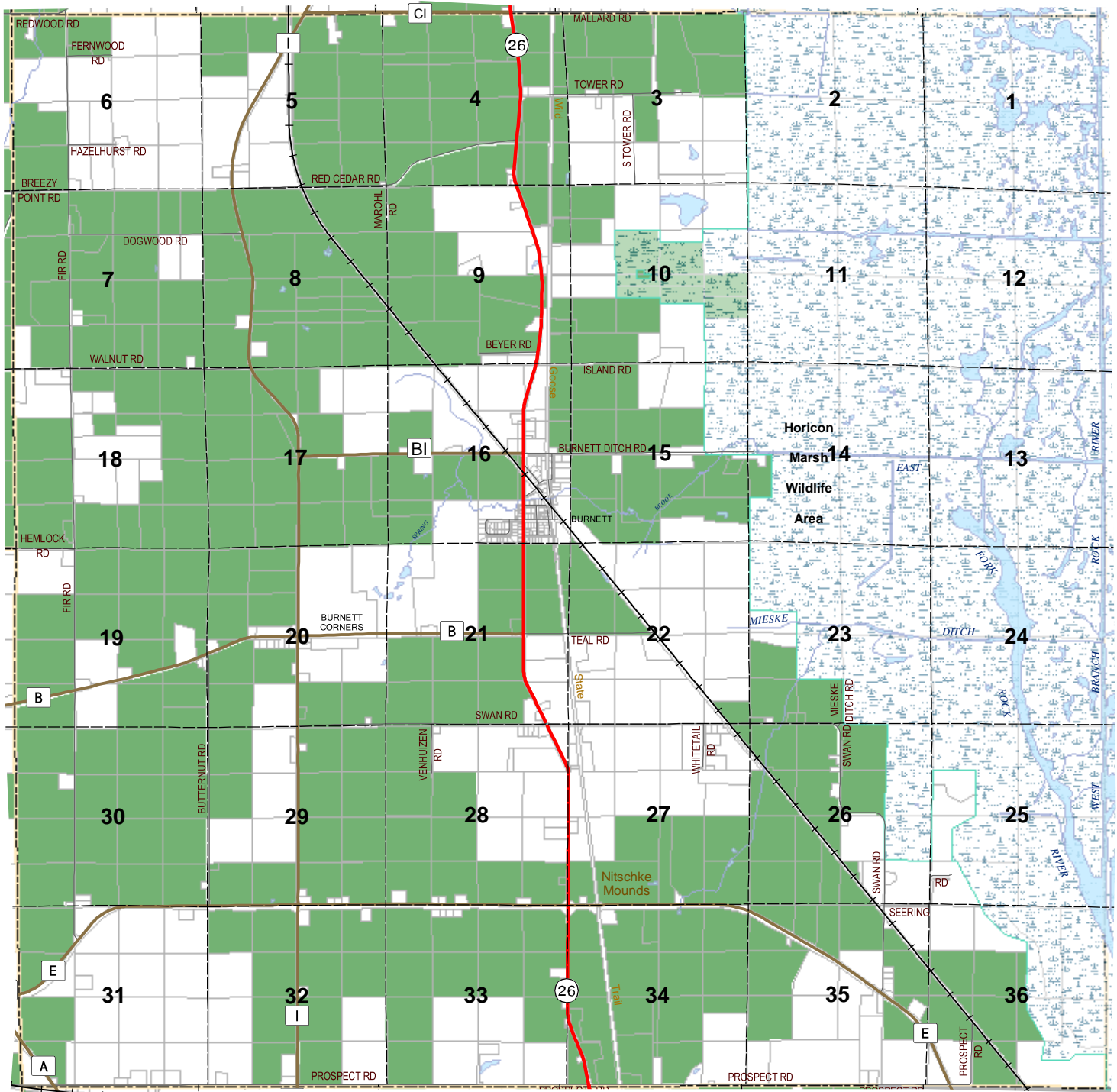


Town of Burnett

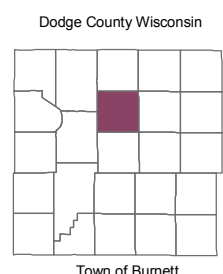
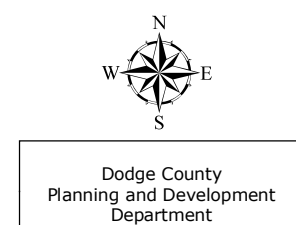
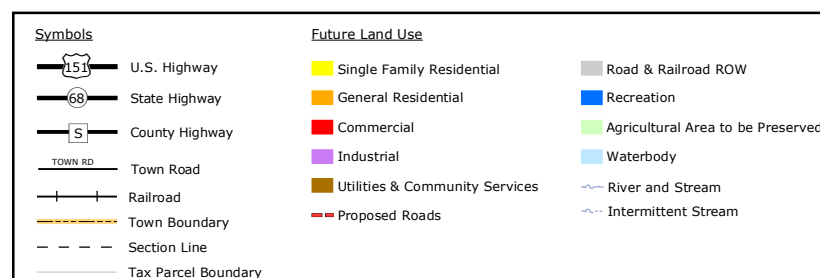
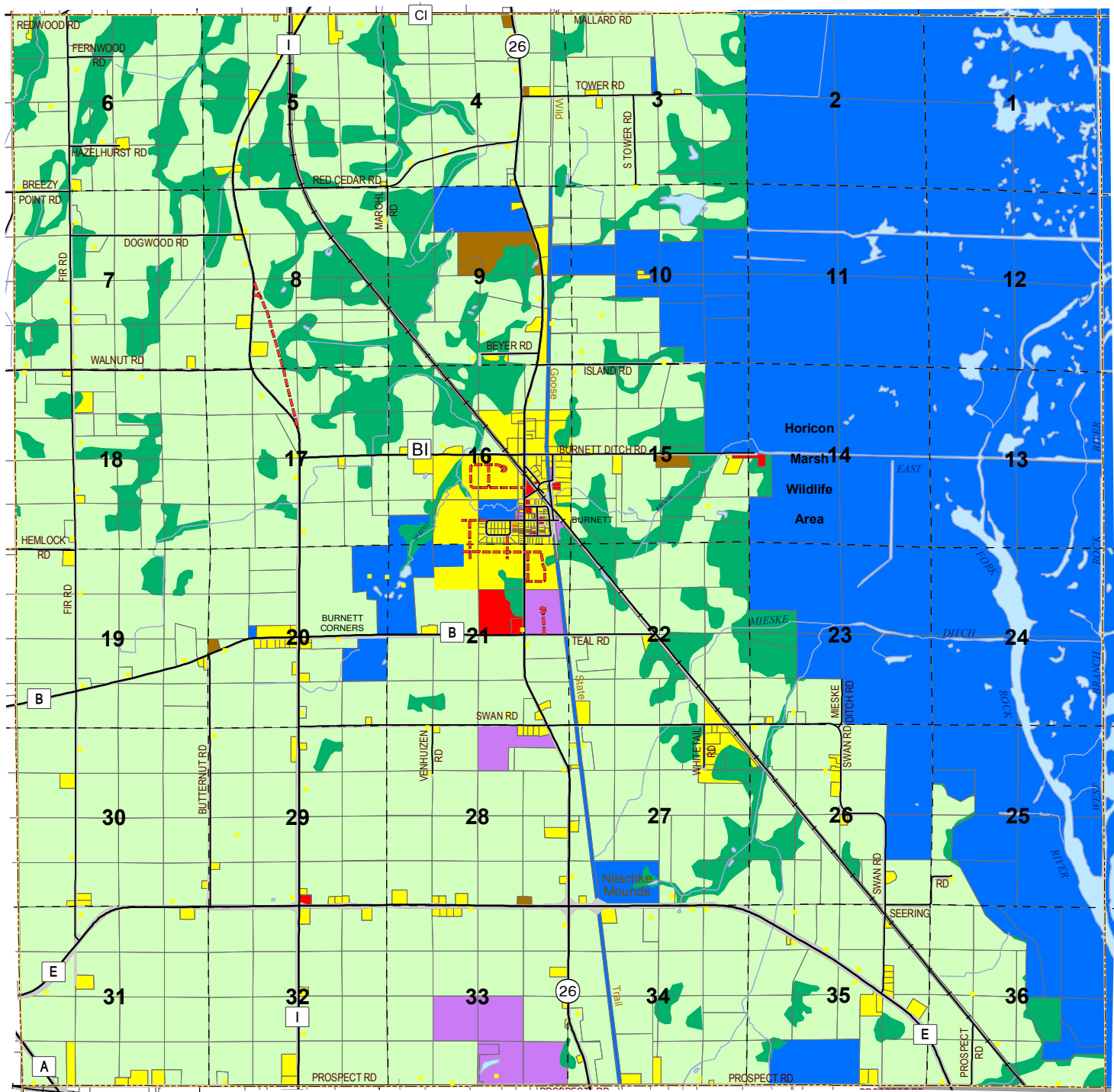
Source: Dodge County Planning and Development Department, April 2004

0 0.5 1 2 Miles

Map 8-2, Farmland Preservation Participants
Town of Burnett, Dodge County, Wisconsin

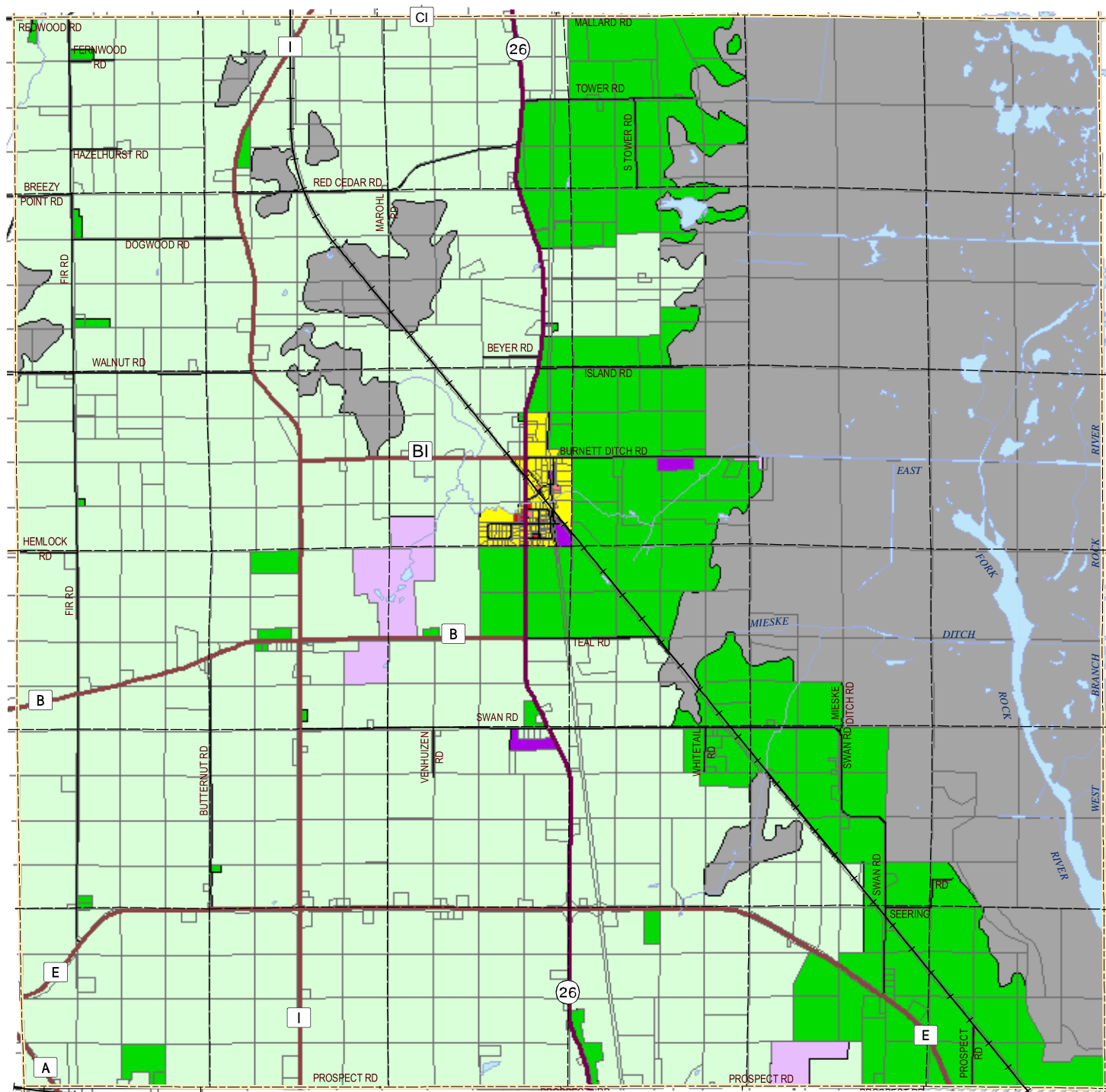


Map 8-3, Year 2030 Future Land Use Town of Burnett, Dodge County, Wisconsin



Source: Dodge County Planning and Development Department, July 2005

Map 9-1, Existing Zoning Town of Burnett, Dodge County, Wisconsin



Legend

- U. S. Highway
- State Highway
- County Highway
- Town Road
- Railroad
- Town Boundary
- Section Line
- Tax Parcel Boundary

Zoning

- Prime Agricultural
- Agricultural
- Convenience Commercial
- Shopping Center
- Waterbody
- Industrial
- Recreational
- Rural Development
- Conservancy
- City or Village

Source: Dodge County Planning and Development Department, April 2004

Dodge County Planning and Development Department

Dodge County Wisconsin

Town of Burnett

0 0.5 1 2 Miles